



AkuRy-GmbH

well-being solutions

Zum Hartberg 20 | 64739 Höchst i. O.
Telefon 06163 9439736 | Mobil 0173 3646317
www.akuryprodukte.ch | info@akury.de



Products for your bioenergetic information management



Catalog 4/2020

Table of Contents

AkuRy Informations-Chips

- Informations Chips in alphabetical order **Seite 4**
- The inner spring cleaning **Seite 49**
- Influenza/Corona-Virus **Seite 49**
- Influenza Set Support / Corona-Virus **Seite 50**
- Early childhood reflexes **Seite 51**
- To rid the body of toxins **Seite 59**
- Detoxifying agents **Seite 63**
- I have an allergy. What can I do about it? **Seite 66**
- Chip combinations, the most common **Seite 70**
- Answers recurring questions **Seite 72**

AkuRy Tapes

Seite 74

- The akury Relief Tape
- The akury Inflammation Tape
- The akury Blood-Circulation Tape
- The akury Sleep Well Tape
- The akury vagus-nerve Tape
- The akury Allergy Tape

The bioenergetic home- and travel kit

Seite 76

Description of function, mode of action
and handling of the chips and tapes

AkuRy literature

Seite 79

- Bioenergetic Information Management
- On the trail of the energy robbers

AkuRy Energy Card for more Energie

Seite 81

Storage of the information chips

Seite 82

- AkuRy Belt Safe
- AkuRy Safe bracelet

eProtect-Chip with integrated 5G technology

Seite 84

AkuRy Amulets

Seite 86

Pendants for animals

Seite 87

AkuRy Glass Cube

Seite 88

AkuRy Glass Cube Travel Set

Seite 89

AkuRy Stick

Seite 90



akury®
where energy grows

Information chips in alphabetical order

Put together your own set from over
100 information chips.



Akury information chips from A to Z

Here you will find all akury information chips in alphabetical order.

ACE

Acetylcholin

www.akury.de

ACE - Acetylcholine

is the most important neurotransmitter in the peripheral nervous system. The messenger substance mediates the transmission of nerve impulses to muscles. In addition, acetylcholine plays a major role in the autonomic nervous system, respiratory, heart and metabolic control.

ADR

Adrenalin

www.akury.de

ADR - Adrenaline

a stress hormone, is formed in the adrenal medulla and secreted in physical/mental stress. Its main function is the adaptation of the cardiovascular system and the metabolism of stress-related charges. With adrenaline, our system is "booted". Alarm! Danger! Energy demand! Flight or fight! Fat and sugar are provided, increases the blood pressure.

AHN

Ahnenkraft

www.akury.de

AHN - Ancestral force

The chip contains frequencies that contribute on the energetic level to the recognition of the power of our ancestors and develop it positively

ALZ

Alzheimer

www.akury.de

ALZ - Alzheimer's disease

Alzheimer's is a previously incurable brain disorder. The death of nerve cells in the brain makes people with Alzheimer's increasingly forgetful, confused and disoriented. Many patients become restless, aggressive or depressed. On the energetic level, the chip should contribute to optimizing the permeability of the blood vessels in the brain and to improving the oxygen and energy supply in the brain so that the transmission and processing of information at the transfer points between the nerve cells continues.



AMA - Attention Mindfulness Alertness

With a concentrated alertness and an attentive view, it is possible to quickly capture a situation and to react flexibly and act from the quiet inner center.



ANF - Anal fissure

The anal fissure is usually a very painful tear of the anus or the perianal mucosa. It is one of the most common diseases of the rectum, whereby a distinction is made between acute and chronic anal fissures. Mainly younger to middle-aged adults are affected. The ANF chip can support the healing process and strengthen the function of the shooting muscle tone.



ANZ - Attraction

Attraction is generally a force acting towards a body or a force center; in psychology, it is a psychic force emanating from an object.

The law of attraction applies generally, to everything and everyone. It applies to everything that exists. Every thought we think, every feeling we feel, attracts similar or similar thoughts and feelings. It is enough that we look at something attentively. This creates thoughts and each thought evokes corresponding feelings and vibration patterns.

The chip contains formulas and frequencies, which intended to support and strengthen the desirable positive impulses in the form of thoughts and feelings. According to the law of attraction, the chip should help to dock on to the similar oscillation patterns in order to make the desired thing become real.



ARA - Aura

Aura is the energetic radiation of the human being. It reflects our health, characteristics, character as well as spiritual and psychological development. Aura is unique and unrepeatable for everyone. In a healthy, energetic person, the aura is clear and pure, and difficult to penetrate by foreign energies. If the person is ill, takes strong medication or has negative thoughts, holes can appear in the aura, which facilitate the access of foreign energies.

The chip is designed to stabilize, protect and clean the four-layered aura and make it appear in all layers in a brilliant and clear light.



ASS - Amino acid metabolism

The amino acid metabolism comprises the biochemical processes involved in the synthesis, breakdown and conversion of amino acids. Amino acids serve as building blocks for the synthesis of all proteins. They also act as nitrogen donors in the synthesis of nitrogen-containing compounds. Individual amino acids are precursors of neurotransmitters and hormones (e.g. catecholamines). The chip (ASS) is supposed to support the amino acid metabolism.



AUS - Excretion

On the energetic level, the chip supports the removal of heavy metals and environmental toxins.



AUT - Autism

Expands the focus of attention, promotes the connection to the person themselves and improves the establishment of social contacts

**BAK - Bacteria**

The information chip contains frequencies and formulas that are responsible for immune self-regulation in all acute and chronic infectious bacterial processes.

**BAT - Basic Trust**

Through the feeling of being welcomed and accepted by the heart, there is a sense of trust. This can lead to the confidence that all situations in my life have their significance and are conducive to my development.

**BEL - Gratifikation**

Who of us does not know, after a tiring or successful day, to indulge in something „good“ and to reward oneself with something „special“. Be it a special meal, a good glass of wine, a chocolate bar or a bag of chips in front of the TV. Good is the reward principle, if it does not become a habit or even an addiction. When the reward stores are empty, there is a risk of becoming dependent on the salary habit.

The „Reward“ akury information chip regulates the reward storage and provides a satisfying, enjoyable and satisfying reward in moderation.

**BIL - Bilharziosis/Schistosomiasis**

also known as bilharziosis, is a worm disease caused by the larvae of suckworms of the genus Schistosoma. It is spread in warm inland waters by snails as intermediate hosts. The chip contains frequencies and formulas that are intended to interrupt the infection cycle of bilharziosis.

**BLA - Bladder**

There are around six million people in Germany whose bladder function is disturbed. Anatomical and hormonal differences mean that women are affected twice as often as men at a young age. The chip is intended to help stabilize and strengthen the bladder and sphincter muscles and the autonomic nervous system.

**BOM - Bone metabolism**

The chip supports the build-up and breakdown of bone substances as well as the nutrition of the cells present in cooking. It is intended to promote mineralization through the organic basic substances and the bone matrix.

**BPA - Biophoton activation / biophoton emission**

The effect of biophotons. The radiation of light, namely solar radiation, forms the basis for all life forms on our earth - it is the most original source of energy and essential for every cell of the body. It is quite simple - without light there is no life! Our body cells „talk“ to each other via biophotons. A deficit of biophotons, which can be caused by environmental influences, radio radiation, stress and much more, can therefore directly cause a deficit of information and cause ultra-weak cell radiation. The consequential errors in cell communication can be manifold and have not yet been fully researched. The BPA chip contains frequencies and information that protect and strengthen the cell communication by the biophotons and keep the biophoton emission in balance.

**BOR - Borrelia**

The chip contains frequencies and formulas that are responsible for immune self-regulation in all infectious processes triggered by Borrelia.

BUR

Free and pure
Befreit und rein

www.akury.de

BUR - Free and pure

The energy flow is blocked in many people by alien energies, occupations or attachments. Foreign energies can significantly influence action and thinking. The chip „Free and pure“ should help to protect people from alien energies and to dissolve them out of their bodies

BSD

Pancreas

Bauchspeicheldrüse

www.akury.de

BSD - Pancreas

The pancreas fulfils two vital functions: On the one hand, it produces the digestive juices necessary for the breakdown and comminution of food in the intestine. On the other hand, it forms the hormones insulin and glucagon, which determine blood sugar levels. The information chip contains frequencies and formulas which support the function of the pancreas and which can also be used to regulate a hyperproliferative process in relation to pancreatic cells.

CAN

Candida

www.akury.de

CAN - Candida

Candida is initially only a harmless yeast. Candida or yeast epizootics can cause up to 50 different symptoms. The most common are bloating, constipation, itching and abdominal cramps. In Germany, up to 400,000 people get into candidosis each year. The chip should help support the therapy to restore the natural balance.

CAT

Catalyst

www.akury.de

CAT - Catalyst

Activation, regulation and harmonization of the chakras and balancing of the polarities. Is used most commonly in combination with other Information Chips.



CHA - Chakra Balance

The teaching of the chakras, the energy centers of the body, is thousands of years old and is also attracting increasing interest in the West. If the flow of energy in and between the chakras is disturbed, this has consequences for our physical and mental health. The chip contains frequencies and formulas that help to open, balance and stabilize the chakras. The chip is closely connected to the aura chip, because both information chips complement each other.

CHO

Cholesterin

www.akury.de

CHO - Cholesterol

Cholesterol is a fat-like substance that is vital for humans, as it performs important functions in the entire organism. Cholesterol, for example, plays a decisive role in the structure of the cell membrane and in many metabolic processes in the brain. At the same time, cholesterol is an important raw material in the body for the production of bile acids for fat digestion and for the formation of vitamin D and certain hormones (e.g. estrogen, testosterone and cortisol, which acts as a stress hormone and is essential for many body functions).

The chip contains formulas and frequencies designed to optimize cholesterol levels and fatty acid regulation.

COM

Completion

www.akury.de

COM - Completion

The healthy human being on all levels; all bodies and functions are harmonized and work perfectly with each other.

CON

Concentration
Konzentration

www.akury.de

CON - Concentration

Concentration and presence are promoted, with a focused clarity you can calmly and calmly dedicate to the task and work effectively.

COR Cortisol

www.akury.de

COR - Cortisol

is one of the biochemical messengers (hormones) and is formed in the adrenal cortex. The spectrum of activity of this hormone is very diverse. Among others, Cortisol is involved in the regulation of growth and in numerous metabolic processes such as lipid metabolism, the protein turnover and the carbohydrate metabolism.

CPP

Cell Purificator Process

www.akury.de

CPP - Cell Purification Process

This chip contains frequency patterns that create a field on the energetic level for cell cleansing.

DFE

Tripple Warmer Dreifachwärmer

www.akury.de

DFE - Tripple Warmer

He is, so to speak, the „manager“ between the chest, upper abdomen and lower abdomen: the „upper“ warmer warms the lungs and the heart, the „lower“ regulates the liver, kidneys, small and large intestine and the bladder, while the middle stomach and spleen affected. The information chip supports the function of the triple heater.

DHEA

Dehydro- epiandrosteron

www.akury.de

DHEA - (dehydroepiandrosterone)

is the hormonal fountain of youth in us. It is the precursor of many hormones in the body and therefore is considered the „mother of all hormones“. It occurs in both men and women. In „Burnout“, it is of relevance that DHEA is an opponent of cortisol. It turns the body back on austerity. Other effects: anti-oxidation, anti-free radical, antiinflammatory, important in immune response.

DHV

Endurance
Durchhaltevermögen
www.akury.de

DHV - Endurance

The DHV chip contains frequencies and formulas designed to support the maintenance of effort over a longer period of time on both the mental and physical levels.

DIA 1

Diabetes TYP 1

www.akury.de

DIA 1 - Diabetes Typ 1

Type 1 diabetes occurs when the body's immune system, which is primarily used to ward off pathogenic germs, targets and destroys the insulin-producing cells of the pancreas. As a result, it often comes within a short time to the lack of insulin production and thus to high blood sugar levels in the blood.

The DIA I information chip aims to optimally balance and stabilize the body's immune system and to help protect insulin-producing cells.

DIA 2

Diabetes TYP 3

www.akury.de

DIA 2 - Diabetes Typ 2

Type 2 diabetes is a chronic metabolic disease in which blood sugar levels are elevated. The reason for this is insulin resistance. In this case, the body cells respond worse to insulin. The hormone insulin actually has the task of forwarding the sugar molecules from the blood into the cells. In the case of insulin resistance, this is only insufficiently successful - the sugar accumulates in the blood vessels. The DIA II information chip is designed to support optimal insulin production and supply to the body's cells, thus contributing to the resolution of the metabolic disorder in the long term.

DID

Large intestine Dickdarm

www.akury.de

DID - Large intestine

The large intestine - digestion and immune defense. The large intestine is the heaviest worker in the body. Its task is to extract the water and salt from the still liquid chyme that comes from the stomach and small intestine, to conduct it into the body and to eliminate the indigestible rest. The information chip supports the colon with its tasks.



DNA - Deoxyribonucleic acid

The information chip DNA serves to protect the genetic material stored in the DNA. It is intended, to support the function of DNA repair enzymes and optimize the linking of the three basic DNA building blocks base, sugar and phosphoric acid.



DOP - Dopamine

also works against fatigue and tiredness. It is the precursor of norepinephrine and epinephrine and therefore one of the most important neurotransmitters (chemical messengers) in the central nervous system.



DRS - Deep Restful Sleep

The body becomes calmer and more relaxed, a sense of „protected and secure“ occurs, so that a deep and restful sleep becomes possible.



COR - Small Intestine

The small intestine is part of the digestive tract and is used to absorb nutrients from food. In addition to its function to absorb nutrients, the small intestine is also the main place for water absorption in humans. The information chip supports the task of the small intestine.



EBV - Epstein-Barr virus

The information chip contains frequencies and formulas that are responsible for the immunogenetic regulation of all infectious processes associated with the Epstein-Barr virus.



EEE - Detoxification, purification and deacidification

The EEE chip can detoxify, purify and deacidify the whole body, all organs and tissue layers on the energetic level and also support the cleansing processes on the physical level so that the metabolism works again, the cells work well and the toxins can be eliminated.

Together with the information chips OME, and MIR the EEE forms an optimal total package.



EIS - Iron Metabolism

This chip contains information to improve the absorption capacity for iron. It contributes to a balance between the uptake, storage, use and recycling of iron.



EMO - Emotions

Subliminal and non-conscious emotions can come to the surface to be processed and resolved.



ENG - Energetic

The chip supports the optimal flow of energy and gives the feeling of being powerful, energetic, spirited, determined and vital.



ENT - Inflammation (ENT)

This chip contains information that is intended to ensure the body's optimal immune response to inflammation. During the inflammation phase it contributes to the energy supply needed for the active immune defence. The chip is intended to support the healing process against inflammatory processes caused by UV rays, heat damage, chemical substances, injuries or the body's own stimuli such as autoimmune diseases. It is intended to increase the permeability of the small blood vessels so that defence cells can more easily enter the affected tissue. There is also a patch for this chip



EPI - Epiphysis

The pineal gland is only a few millimetres in size, but it controls important processes in the human body. With the help of the hormone melatonin, the pineal gland controls the human internal clock and thus the circadian rhythm. Melatonin also plays an important role for the immune system and is therefore of particular interest for patients suffering from autoimmune diseases. The EPI chip can support the important functions of the pineal gland.



EST - Estriol

Estriol is mainly synthesized in the placenta during pregnancy and is therefore often referred to as pregnancy estrogen. It is also produced in small quantities in the liver, ovaries and adrenal cortex.

The chip contains frequencies and formulas that support the formation of estriol.



FAB - Fast Adaptability

Performs a rapid adaptation to the surrounding environment following the principle of the chameleon. The person's own area remains protected thanks to a type of neoprene membrane



FEA - Fearless

On the energetic level, the chip gives the body an impulse to recognise the cause of anxiety and overcome it. The chip should only be used and passed on to their patients by experienced therapists.



FEH - Five Elements Harmonization

Following the resonance principle, disharmonies in the five elements of the human organism are balanced and are brought into harmony .



FIB - Fibromyalgia,

fibromyalgia syndrome is a complex of complaints, with strong muscular pain in the whole body. The term literally means fiber-muscle pain. The chip has already been tested on a number of Fibromyalgia clients and shows amazing alleviating characteristics.



FIF - Follow Your Intuitive Flair

The chip contains frequencies that promote trust in the intuitive instincts.



FRI - Fructose intolerance

Fructose intolerance (fructose malabsorption) is a food intolerance in which fruit sugar (fructose) is only tolerated to a limited extent or not at all. This means that fructose is not properly absorbed into the bloodstream in the small intestine. It gets into the large intestine where it is decomposed by bacteria. This produces gases that can often lead to stomach aches or other symptoms. The chip (FRI) can initially be used by the therapist to detect fructose intolerance and support the customer/client/patient in his therapy.



GAB - GABA (gamma-aminobutyric acid)

is a protein compound formed in the body (Amin) of glutamic acid and the effect of her most important inhibitory (inhibitory) neurotransmitter in the nervous system. Among the neurotransmitters, GABA belongs to the "Brake System". We need GABA to "to calm down" again.



GAL - Gallbladder

The gallbladder stores bile from the liver and thickens it. Bile, in turn, helps to split and absorb fats from food in the duodenum. The information chip contains frequencies and formulas that support the functions of the gallbladder.



GER - Healthy Rhythm

Heart, breath and biorhythm are balanced, the chip can also help to find a healthy rhythm.



GHR - Ghrelin

is an appetite-stimulating hormone produced in the gastric mucosa and the pancreas. Besides the appetite stimulation, the hormone has a number of other effects.



Healthy hair growth

Human hair is one of the most active cell-forming tissues in the human body. Every person has about 80,000 to 120,000 hairs on their head, tubular horn threads consisting of keratin, pigments, minerals, lipids and water. The insoluble and extremely resistant protein keratin reveals its close relationship to nails. With healthy hair growth, the individual growth rhythm of each hair follicle ensures that the hair volume is constantly maintained. The GHW chip contains formulas and frequencies that can support healthy hair growth.



GLU - Glutamate

is a salt of glutamic acid, which occurs naturally in the human body, and is not only part of proteins, but also has an important function as a messenger (neurotransmitter) for the central nervous system.



GLZ - Glial cells (GLZ)

Glial cells form the cell tissue in the nervous system of the brain. They are also involved in the nutrition and information transfer of the nerve cells. At the energetic level, the chip supports the neural function of the glial cells and the structuring of the brain by glial cells.



GSW - Brain Metabolism

The chip contains frequencies and formulas that support and regulate the very complex metabolism of the brain.



GUL - Good Mood

The task of the „Good Mood Chip“ is to improve the mood, the basic positive attitude towards life, the inner joy and satisfaction. Good mood also ensures more interpersonal contact, a larger circle of friends and an overall better social structure. Last but not least, a good mood helps to overcome problems and also to master difficult situations.



GUV - Gluten intolerance

The term gluten intolerance can mean three findings: celiac disease, gluten sensitivity or wheat allergy. These wheat- or gluten-induced illnesses express themselves differently from person to person, so the respective symptoms do not indicate any of the diseases. The most common symptoms are diarrhoea, abdominal pain and constipation (intestinal symptoms), as well as anaemia, joint pain, fatigue, exhaustion and listlessness (extraintestinal symptoms).

The chip (GUV) can initially be used by the therapist to detect gluten intolerance and to support the client/customer/patient in his therapy.



HCP - Helicobacter pylori

The chip contains frequencies and formulas that are responsible for immune self-regulation in all infectious processes triggered by Helicobacter pylori.



HIN - Dedication

In the event of an illness or serious crisis, it is sensible to let go and give in to the situation. This chip contains frequencies that support this process on the ethereal plane.



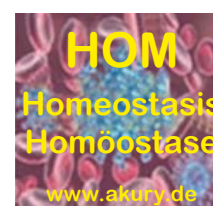
HIS - Histamine

is a biogenic amine, it belongs to the category of so-called tissue hormones. The substance plays a central role in many physiological and pathophysiological processes, and is, among others, an important mediator in inflammation.



HIT - Histamine Intolerance

Histamine is a substance that is involved in the human body for our immune system in the defence against foreign substances. Histamines are formed in the human organism, but are also contained in many foods. In case of a histamine intolerance, the histamine absorbed through food and formed in the body cannot or only partially be broken down. When consuming histamine-containing food or when the body releases too many histamines, a pseudoallergic reaction of the body occurs. The HIT chip contains formulas and frequencies that are intended to support the breakdown of biogenic amines (histamine) via the enzyme diamine oxidase (DAO) in the small intestine.



HOM - Homeostasis

Homeostasis refers to the maintenance of the so-called inner environment of the body with the help of control systems. These systems can include regulation of the circulation, body temperature, pH value, water and electrolyte balance or control of the hormone balance.

The chip helps to stabilize the flow balance and support self-regulation through the systems involved in the hypothalamus, veg. nervous system, endocrine system, pituitary gland, CNS, activation system and limbic system. Furthermore, it shall contribute to compensate differences of an actual value to a target value.

HON
Honesty
Ehrlichkeit
www.akury.de

HON - Honesty

"Being honest with yourself" leads to self-knowledge and contributes on the emotional level to the stabilisation of health.

HPU
Hämopyrrol-
laktamurie
www.akury.de

HPU - Hemopyrrollactamuria

is a metabolic disorder that causes losses of active vitamin B6, zinc and manganese. This disturbs our body's detoxification. This can lead to serious physical complaints.

HPV
Humanen
Papillomvirus
www.akury.de

HPV - Human Papillomavirus

The information chip contains frequencies and formulas that are responsible for immune self-regulation in all infectious processes triggered by the human papillomavirus.

HRZ
Heart
Herz
www.akury.de

HRZ - Heart

The heart creates the connection between the lung and body circulation. Due to its structure, it is optimally adapted to its main task: to continuously pump the blood through the body and thus to ensure that the organs are supplied with oxygen. The information chip supports the important function of the heart.

HSV 1+2
Herpes
Simplex-Virus
www.akury.de

HSV 1 + 2 - Herpes simplex virus

The information chip contains frequencies and formulas that are responsible for immune self-regulation in all infectious processes triggered by the herpes simplex virus.

INF
Keep Healthy
Bleibe gesund
www.akury.de

INF - NEW infections

Infection is the term used to describe the entry of microorganisms (for example viruses, fungi or bacteria) into an organism as well as their colonization and reproduction. In a broader sense, infectious diseases are also referred to as „infections“ in an imprecise manner. The INF-Chip contains frequencies and formulas of the plant extract *Artemisia annua* (annual mugwort). Artemisinin is the basis of the anti-malaria combination therapy. Virologists have discovered in laboratory studies that aqueous and ethanolic extracts of *Artemisia annua* are effective against the new corona virus. The chip should be worn on the body. In addition, the chip can be placed under a glass of water for 2 minutes. The water is a good carrier of information and is able to absorb the information from the INF-Chip within a short time and bring it quickly to the cell. This effect is highly desirable and supports the immune system in defending itself against unwanted microorganisms.

JTR
Jaws and Teeth
Kiefer und Zähne
Regeneration
www.akury.de

JTR - Jaws and Teeth Regeneration

The chip contains frequencies that help on an energetic level in the regeneration of the jawbone and teeth.

KEH
Keep Healthy
Bleibe gesund
www.akury.de

KEH - Keep Healthy

Contains frequencies that help to activate the self-healing powers, to facilitate the recovery and to preserve the health.

KEP
Keep Cool
Bleibe ruhig
www.akury.de

KEP - Keep Cool

With calm and serenity, it is possible to keep an overview even in difficult situations and make clear decisions.

KRE
Creative Powers
Kreativität
www.akury.de

KRE - Creativity

Creativity is the ability to perceive and act in a complex way. For example, to create, invent, solve problems, think or act in a result-oriented way. The frequencies and formulas of the chip contribute to the promotion of creativity.

KSB
Kinetic System
in Balance
www.akury.de

KSB - Kinetic System in Balance

The kinetic system is harmonized and stabilized on the fine material level, which can also have positive effects on the physical body with a better body perception, muscle tension and strength, coordination and mobility.

KWR
Body temperatur
regulation
Körpertemperatur-
regulation
www.akury.de

KWR - Body Heat Regulator

The term thermoregulation encompasses all mechanisms of the human body to maintain a constant body core temperature of about 37°C.

The metabolism and mechanical processes of the body are kept at an optimal „operating temperature“ to the police. Among the most important temperature-dependent processes are the metabolism, the oxygen transport and muscle activity. The AkuRy information chip contains frequencies, information and formulas, that support thermoregulation in the body.

LEA
Life energy
Activator
www.akury.de

LEA - Life Energy Activator

The various functional circuits in the body receive optimization impulses (cell milieu, organ, gland, brain and nerve functions) so that the life energy can flow freely and the body can function well.

LEM
Liver
Leber
www.akury.de

LEM - Liver Metabolism

The liver is the largest gland of the human organism. In addition, it is a vital organ, since the liver metabolism is at the centre of the entire metabolism. The information chip contains frequencies and formulas that support and regulate the complex processes of liver metabolism.

LTI
Lactose intolerance
Laktoseintoleranz
www.akury.de

LTI - Lactose intolerance

After drinking milk and dairy products, many people suffer from digestive problems - such as stomach aches, flatulence or diarrhoea. People who find milk products difficult to digest may only tolerate small amounts of lactose. Experts then speak of lactose intolerance.

The chip (LTI) can initially be used by the therapist to detect lactose intolerance and support the customer/client/patient in his therapy.

LEP
Leptin
www.akury.de

LEP - LEPTIN

Is a hormone involved in controlling hunger and satiety. The frequencies contained in the chip should contribute to optimal appetite regulation.

LGS

Leaky gut syndrome

Leaky Gut Syndrom

www.akury.de

LGS - Leaky Gut Syndrome

„Leaky Gut“ is a term from the English language and means nothing else than permeable intestine. In this disease, the protective function of the intestinal mucosa against pathogens and toxins is severely disturbed. The intestinal membrane becomes permeable - harmful substances enter the bloodstream unhindered. The immune system reacts with inflammatory and allergic processes. The chip contains frequencies and formulas which support and regulate the intestinal immune system, the very complex metabolism of the intestine and the protective function of the intestinal mucosa.

LIF

Find Your Life
Purpose and Path

www.akury.de

LIF - Find Your Life Purpose and Path

These frequencies energetically support the search for a life vocation and the journey through life.

LIN

Relief
Linderung

www.akury.de

LIN - Relief

The painful energy caused by physical and / or psychological wounds can be relieved or dissolved, which can lead to more well-being.

LUN

Lung
Lunge

www.akury.de

LUN - Lung

The lungs are responsible for the absorption of oxygen from the air we breathe into the blood and the release of carbon dioxide from the blood into the air that is exhaled. The inhaled air passes through the trachea into the two main bronchi, each of which leads to one of the two lungs. The information chip supports the function of the lungs.

LYM

Lymphatic System

Lymphatisches
System

www.akury.de

LYM - Lymphatic System

Helps on the energetic level to an optimal lymph flow.

MAG

Stomach
Magen

www.akury.de

MAG - Stomach

The main task of the stomach is to temporarily store the food in order to then pass it on to the intestine evenly in small amounts for further digestion. Without a stomach, people would have to eat the food in many small portions throughout the day. The information chip supports the function of the stomach.

MCC

Microcirculation
Mikrozirkulation

www.akury.de

MCC - Microcirculation (MCC)

The chip contains a multitude of frequencies, which should contribute to the optimal blood circulation of the capillary bed, mass exchange between blood and tissue, to the cell supply with oxygen and nutrients. The transport of metabolism and degradation products is thus integrated. An optimal microcirculation should contribute to the best possible functional condition of the organ systems. In addition, information is entered that leads to an optimal state of the blood vessels (free of deposits, flexible and elastic). The frequencies for an optimal oxygen supply and mitochondrial regeneration are also entered in the chip. There is also a patch for this chip.

MEL

Melatonin

www.akury.de

MEL - Melatonin

is a hormone that regulates sleep. It sets the pace for our hormonal cycles. Lack of melatonin results in lassitude and lethargy and sleep disorders occurring in "burnout".

MEM Memora Erinnerung

www.akury.de

MEM - Memory

With a clear centrality, the receptive capacity for learning can be increased and the memory performance improved.

MEP Menopause

www.akury.de

MEP - Menopause

The akury information chip „Menopause“ is intended to help alleviate the symptoms that occur during menopause, such as hot flashes, sweating, sleep disturbances, mood swings, weight gain and dry mucous membranes.

MES Optimal Menstruation

www.akury.de

MES - Optimal Menstruation

Many women of reproductive age suffer from severe pain in the lower abdomen. This phenomenon is referred to by physicians as „primary dysmenorrhea“. The akury information chip „Optimal Menstruation“ is intended to help alleviate the symptoms that occur during menstruation.

MIG Mild and Gentle

www.akury.de

MIG - Mild and Gentle

The chip contains frequencies that support relaxation in the throat and neck area on an energetic level .

MIP Spleen/Pancreas Milz/Pankreas

www.akury.de

MIP - Spleen

Spleen function plays an important role in the immune system: the small organ is involved in the formation, maturation and storage of lymphocytes - a subset of white blood cells that is important for the defense against pathogens. In addition, the spleen with the macrophages (phagocytes) produces other defense soldiers. The information chip supports the important functions of the spleen.

MIR Mitochondrial Regulation Mitochondrien Regulation

www.akury.de

MIR - Mitochondrial Regulation

The chip supports the cleaning and activation of the mitochondria on the energetic level.



www.akury.de

MOR - Moro-Reflex

The Moro Reflex is an early childhood survival reflex. It is a reflexive response to a threatening situation. The MOR chip contains formulas and frequencies that are intended to support the course and duration of the Moro reflex.

MOT Motivation

www.akury.de

MOT - Motivation

The motivation is the inner drive and the willingness to do something. The chip contains frequencies that promote the drive, incentive, interest and desire to act and persist in pursuing a goal.

MSN Neuronal Synchronization

www.akury.de

MSN - Neuronal Synchronization

The chip contains frequencies for the synchronization of neurons.

MST Mental Strenght Mentale Stärke

www.akury.de

MST - Mental Strength

Whether recreational, competitive athlete, student or top manager, the mental strength often makes it even more successful. This akury information chip promotes the ability to be focused and concentrated to the optimum performance. He promotes the ability of visualization and imagination to think and act beyond ones own limits.

MSW

Mineral metabolism
Mineralstoffwechsel
www.akury.de

MSW - Mineral Metabolism

Mineral metabolism is the absorption, transport and metabolic conversion of minerals by all living beings. The MSW chip contains information and frequencies that are intended to support the optimal interaction of the quantity and trace elements in the body and their metabolism.

MUS

Multiple sclerose
Multiples Sclerose
www.akury.de

MUS - Multiple Sclerosis

The chip contains frequencies that stabilize the central nervous system and regulate inflammation in the brain and spinal cord. The information chip also contains a formula that can be used in the context of negative, i.e. inhibitory, regulation of neurodegenerative diseases and MS

MUT

Man and animal
in harmony
Mensch und Tier
in Harmonie
www.akury.de

MUT - Humans and animals in harmony

Often our pets take over the worries and diseases of their owners and often reach the limits of their life force.

The chip should not only balance the vibration between humans and animals, but should also strengthen the immune system in such a way that it offers protection against parasites, allergies, fungi, high electromagnetic fields and negative environmental influences.

The chip is integrated into a capsule that can be easily attached to the collar. For animals that cannot wear a collar, I have developed an energy card that can be placed close to the animal.

NEN

Adrenal Glands
Nebennieren
www.akury.de

NEN - Adrenal glands

Each adrenal gland consists of two parts: the adrenal medulla on the inside and the adrenal cortex on the outside. The stress hormones adrenaline and noradrenaline are produced in the adrenal medulla and the hormones aldosterone, cortisol and DHEA in the adrenal cortex. Both the failure of the adrenal hormones and an overproduction of the various adrenal hormones lead to clinical pictures. The information chip contains frequencies and formulas which support the adrenal glands in all their functions.

NES

Parathyroids
Nebenschilddrüsen
www.akury.de

NES - Parathyroid glands

The parathyroid gland consists of four individual glands about the size of peanuts, the epithelial bodies. They lie directly behind the thyroid gland in the neck area. The parathyroid gland produces the so-called parathyroid hormone, which regulates the calcium and phosphate balance in the human body.

The parathyroid hormone lowers the amount of phosphate and increases the amount of calcium in the blood. The two minerals are involved in bone formation and degradation. When the parathyroid gland is functioning normally, the build-up and breakdown of bone are balanced. The information chip contains frequencies and formulas that support parathyroid function and regulate parathyroid hormone production.

NEU

Neutrality
Neutralität
www.akury.de

NEU - Neutrality

Can be supportive in taking the position of the neutral observer

NHN

Nerves, Hormones,
Neurotransmitters
www.akury.de

NHN - Nerves, Hormones, Neurotransmitters

The chip contains frequencies for the regeneration of the nerves. On the energetic level, the permeability of the nerve fibre system and the optimal transmission of information are supported by the neurotransmitter (such as hormones).

NIA

Nickel allergy
Nickelallergie
www.akury.de

NIA - Nickel allergy

Nickel allergy is the most common form of contact allergy. Contact with nickel causes a rash in those affected. In a nickel allergy, the body's own defence system (immune system) reacts to nickel - after contact with objects containing nickel. The body's defence system „mistakenly“ classifies nickel as a dangerous intruder that must be fought. The NIA chip contains frequencies and information that are intended to adapt and support the defence system in such a way that no memory cells are produced that could lead to a reaction when nickel contact occurs.



NIR - Kidneys

The most important function of these organs is detoxification. The kidneys excrete metabolic waste products and toxins through the urine. The information chip contains frequencies and formulas which support the detoxification processes and other functions of the kidneys



NOR - Noradrenaline

is an important activating neurotransmitter of the central autonomic nervous system (sympathetic). Cardiovascular, respiratory, metabolic and gastrointestinal functions are controlled by the autonomic nervous system. This also explains why some people with stomach and intestinal problems respond to stress. (Dyspepsia, irritable bowel syndrome).



NOW - Normal Weight

By using targeted impulses, the self-regulatory mechanisms are activated and harmonised on all levels so that, among other things, repressed emotional deficiencies can be recognised and do not need to be compensated for by food .



NPO - Natural Power

These frequency patterns help in recognizing and using the positive forces in Nature.



OCH - Optimal Cell Hydration

Contains frequency patterns that form a field on the energetic level for optimum cell hydration .



OME - Optimal Metabolism

These frequencies bring all the metabolic functions into equilibrium on all energetic levels .



OMT - NEW Optimal muscle tone

Muscle tone describes the state of tension of muscles or a muscle group. Even at rest, muscles have a basic tone, the so-called resting tone. If the muscle tone is disturbed, it can be increased (e.g. rigor in Parkinson's disease) or decreased (flaccid paralysis). Optimal muscle tone also plays an important role in the integration of early childhood reflexes. The OMT Chip contains frequencies and formulas that are designed to support the optimal tension of muscles or muscle groups.



ORX - Orexin plus

is a neuropeptide hormone that is formed in the hypothalamus and has an influence on eating behavior and sleep rhythm. Further effects are assumed in the autonomic nervous system, in the fluid balance and energy metabolism.



OSF - Optimal Skin Function

The skin receives optimal support in its wide range of functions.

ÖST Estrogen Östrogen

www.akury.de

ÖST - Estrogen

The akury information chip „estrogen“ should help to keep the estrogen level at an optimal level. Estrogens provide for the growth of the breast and muscles in the uterus, for cervical mucus formation, and the suppleness of female genitalia.

OTB

Optimal
Trombocyte Balance
Optimale
Trombocyten Balance
www.akury.de

OTB - NEW Optimal Platelet Balance

Blood platelets are formed in the bone marrow from so-called giant cells (megakaryocytes). When they are mature, they enter the bloodstream. Depending on the literature, the life span of platelets is given as between five and twelve days. They are broken down mainly in the spleen, but also in the liver and lungs. The OTB chip contains frequencies and formulas that are designed to support the formation and breakdown of platelets.

OTO Oxytocin Pattern

www.akury.de

OTO - Oxytocin Pattern

This chip creates an oxytocin-like resonance pattern.

OXY Oxygen Balance

www.akury.de

OXY - Oxygen Balance

The chip helps in the balance of open and hidden oxygen deficiency as well as in oxidative stress .

PAN

Protection and
Neutrality
Schutz und
Neutralität
www.akury.de

PAN - Protection and Neutrality

As an energetic protection against disturbing influences of foreign energies and energies thieves, it helps to stay in one's own energy, to be able to separate sensitively between mine and yours and to keep the space and its limits.

PAR

Parasites
Parasiten
www.akury.de

PAR - Parasites

This frequency pattern promotes a parasite-free milieu on the energetic level.

PAS Parkinson

www.akury.de

PAS - Parkinson's disease

More than 250,000 people in Germany suffer from Parkinson's syndrome. The symptoms include a slowing of movement, muscle stiffness, trembling and a disturbed posture. The cause is a change in a certain core region in the brain, the so-called substantia nigra. In Parkinson's disease, the cells of the substantia nigra die at an accelerated rate. As a result, too little dopamine is released, which is important as a signal transmitter between the nerve cells. A significant lack of dopamine is responsible for the loss of muscle control and all other symptoms. The chip contains frequencies designed to inhibit/neutralize the accelerated dying process of the cells in the substantia nigra and release sufficient dopamine.

PEA

Phenethylamin

www.akury.de

PEA - Phenethylamine

was detected in plants (cocoa beans) and it also occurs in our body. It is as a parent substance of many hallucinogens, which are linked to the appearance of pleasure and happiness sensation. This happiness messenger is often cited because it is also contained in chocolate

PEP

Optimal Performance
Optimale Leistung
www.akury.de

PEP - Optimal Performance

With a balanced body tension, increased attention and collected centrality, body and mind are prepared to go with momentum and vigor powerful through the day.

PER

Pericardium
Perikard
www.akury.de

PER - Pericardium

The heart is embedded in a tissue envelope in the chest, the pericardium. This pouch is called the pericardium and consists of connective tissue. These blood vessels supply the heart with oxygen and nutrients. The information chip supports the function of the pericardium.

PNP

Polyneuropathy
Polyneuropathie
www.akury.de

PNP - Polyneuropathy

Polyneuropathy is the generic term for certain diseases of the peripheral nervous system that involve several Nerve damage. Depending on the respective cause, motor, sensitive or vegetative nerves can be affected. Nerves must be affected together or in a concentrated way. The AkuRy information chip contains frequencies, information and formulas that determine the nerve function in the brain, spinal cord, motor functions nerves and the nerves of the digestive and respiratory system.

POT

Positiv Thinking
Positiv Denken
www.akury.de

POT - Positive Thinking

With more serenity and heart rest, it is possible to get distance to a situation and to be able to make a different assessment through the new perspective.

POZ

Potency
Potenz
www.akury.de

POZ - Potency

Erectile dysfunction is often due to various physical and/or psychological reasons: e.g. cardiovascular diseases, diabetes, injuries to the erectile tissue, stress, inhibitions, depression with high stress levels, fear of failure or an unhealthy lifestyle (alcohol, smoking, drugs).

The POZ chip contains formulas and frequencies that can support erectile function.

PRO

Progesterone
Progesteron
www.akury.de

PRO - Progesterone

Is a sex hormone that is mainly formed in the female body. It is important, among other things, for the preparation and maintenance of pregnancy. The frequencies contained in the chip should help to keep the progesterone level within the range of the standard values.

PTT

Prostate
Prostata
www.akury.de

PTT - Prostate

The chip contains information that is intended to help relax the smooth muscles in the prostate and bladder neck. It is designed to assist in urination and help empty the bladder completely.

PUB

Puberty (f)
Pubertät (w)
www.akury.de

PUB (m) - Puberty (m)

The information contained in the chip is intended to support the normal development of the sex organs up to sexual maturity. It is designed to promote interaction between the hypothalamus and the pituitary gland in order to release the optimal amount of hormones required for muscles and bone cells. In boys, it is said to regulate the release of testosterone. It should also control self-confidence and risk assessment. The puberty cycle should be without major mood swings.

PUB
Puberty (m)
Pubertät (m)
www.akury.de

PUB (f) - Puberty (w)

The information contained in the chip is intended to support the normal development of the sex organs up to sexual maturity. It is designed to promote interaction between the hypothalamus and the pituitary gland in order to release the optimal amount of hormones required for muscles and bone cells. In girls, it is said to regulate the release of estrogen and progesterone. It should also control self-confidence and risk assessment. The puberty cycle should run without major mood swings.

RAC
Rapid Acclimatization
Schnelle
Akklimationisierung
www.akury.de

RAC - Rapid Acclimatization

Similar to the action of the FA Chip, helps the impulse to adapt quickly to changing environmental factors on the physical level (e.g. sensitivity to weather changes, cold and heat sensitivity).

RBB
Recharge the Body
Batteries
Aufladen der Körper
Batterien
www.akury.de

RBB - Recharge the Body Batteries

The subtle body is balanced and energetically charged, which can also have a positive effect on the physical body.

REC
Quick Recovery
Schnelle Erholung
www.akury.de

REC - Quick Recovery

This chip should lead to a quick recovery after a mental and / or physically demanding phase. It should also contribute to the best possible oxygen uptake and utilization as well as to the faster detoxification and removal of waste products from the organs and in the blood. It is particularly suitable for athletes and people who have to meet high mental and physical demands.

REF
Reflux
www.akury.de

REF - Reflux

The term reflux refers to the reflux of the acidic stomach contents into the esophagus. A reflux disease is a condition in which either symptoms occur or the mucous membrane of the esophagus changes. The technical term for the esophagus is esophagus. If the mucous membrane of the esophagus inflames due to irritation by aggressive gastric acid, doctors speak of reflux esophagitis. The stomach produces hydrochloric acid to digest food components and kill pathogens. If the muscle at the end of the esophagus does not close the stomach entrance sufficiently, acid stomach contents can rise into the esophagus. The information chip contains frequencies and formulas that support the sphincter muscle function.

REK
Reboot Kick
Neustart
www.akury.de

REK - Reboot Kick

A computer that has not been used for a long time or whose batteries are empty needs an impulse to start it up again. It is the same with humans, whose rechargeable batteries are almost empty, and who wants to get out of the phase of energylessness or even deep depression. The Reboot Kick Information chip should help him get out of this situation.

RES
Resistant
Resistent
www.akury.de

RES - Resistant

An allergy is an excessive defence reaction of the immune system against specific and typically harmless environmental substances. On the energetic level, the chip gives the body an impulse to reconstitute and maintain the immune system and develop a resistance against allergens.

REX
Relaxation
Entspannung
www.akury.de

REX - Relaxation

A large proportion of people today feel „stress-prone“. The hustle and bustle of everyday life is causing us more and more and may affect our health. The information chip „Relaxation“ should help to reduce the tension level, which could also be called an „anti-stress chip“.



RLS - Restless Legs

The term „Restless Legs“ (also Restless Legs Syndrome, RLS) means translated „restless legs“. Affected persons have an agonizing urge to move and often feel an unpleasant pulling or tingling in their legs. The complaints occur exclusively in resting situations and improve through movement. The causes of RLS could be related to dopamine messenger metabolism, heredity, and in the case of secondary RLS also certain drugs, polyneuropathy, pregnancy, rheumatism, kidney disease and iron deficiency, among others.

The chip contains formulas and frequencies that can support RLS therapy.



RNA - Ribonucleic acid

Like DNA, RNA consists of a sugar phosphate backbone and a sequence of bases. In contrast to DNA, the sugar in RNA is ribose, and one of the four bases, namely thymine (T) is replaced by uracil (U). The most important difference to DNA, however, is that RNA does not occur as a double helix, but as a single strand. The task of RNA is to transport and translate the information stored in the DNA. However, it also influences gene activity.

The chip contains frequencies and formulas that support the important tasks of RNA. It should help to remove faulty DNA sequences and replace the correct code via the repair mechanisms in the cell. This process can also be activated via the messenger RNA, thereby producing a functional protein.



ROA - Rid of Addiction

These frequencies energetically support the release from addictions and dependencies.



rT3 - Triiodothyronine, also called liothyronine

is one of two important thyroid hormones. It is the most active hormone of the thyroid gland and surpasses in its effectiveness the second iodine-containing thyroid hormone tetraiodothyronine, also called thyroxine or levothyroxine.



SBB - Acids Bases Balance

The chip ensures a balanced acid-base balance.



SDD - Thyroid gland

The thyroid gland is a vital hormonal gland. It plays a major role in the metabolism, the growth and maturation of the body and helps to regulate numerous bodily functions. In addition it gives a certain amount of thyroid hormones into the blood. Does the metabolism need a certain amount of thyroid hormones in situations such as cold, during growth or during pregnancy, more energy is produced by the thyroid gland. The AkuRy information chip contains formulas, frequencies and information that supports the optimal function of the thyroid gland.



SEE - See Clarity

The chip improves and refines vision on the mental level and supports clarity in recognition and visualisation .

SEH

Eyesight Sehkraft

www.akury.de

SEH - Eyesight

The chip is intended to improve and stabilize the visual performance on the physical level

SELBST

www.akury.de

SELBST

The chip SELBST is intended to restore the natural order that is inherent in every person/thing from its origin. This is intended to promote self-awareness, self-confidence, self-value, self-stability and self-realisation. The basic idea here is that a person is healthiest, most capable and happiest when he or she corresponds to his or her true nature, personality and true inner core/soul.

SEN

Harmonize all Senses Harmonisierung aller Sinne

www.akury.de

SEN - Harmonize all Senses

These frequencies support all the senses (including the sixth and seventh senses), so that they are able to be 100% present, functioning harmoniously and optimally with each other.

SEP

Separation Abgrenzung

www.akury.de

SEP - Separation/Abgrenzung

The chip has the task of delimiting itself in appropriate situations and being able to say no without feeling guilty or afraid of rejection

SER

Serotonin

www.akury.de

SER - Serotonin

is known as the body's own antidepressant (happiness hormone). It is a soothing, relaxing and strongly mood-lifting neurotransmitter. It is sleep inducing, antidepressant, pain relieving and motivating. In addition, serotonin positively influenced the saturation feeling and thus acts appetite-regulating

SIR

Strong Immune System Regeneration

www.akury.de

SIR - Strong Immune System Regeneration

The chip gives the body an impulse on the energetic level to restore and/or maintain an intact immune system

SOS

Rescue Notfall

www.akury.de

SOS - Rescue

In emergencies, this chip is intended to quickly harmonize inner tension, psychological stress and restlessness. It supports the inner balance in psychological injuries and balances panic and despair. It is applicable after the death of a close person, before an operation, after the receipt of a bad news or with the multiplicity of fears.

SRC

Self-esteem Self-respect Self-confidence

www.akury.de

SRC - Self-esteem, Self-respect, Self-confidence

These frequencies strengthen self-confidence and promote self-respect and self-worth .



SSB - Strong and firm connective tissue

“Connective tissue” is the generic term for the various types of tissue that permeate the body. With collagen and elastic fibres, they primarily fulfil a protective function: the tissue supports and stabilises our body and keeps it in shape. It also serves as a switch point for the supply of nutrients and the removal of harmful substances from the cells. The soft components of the network enveloping us are called fasciae. The SSB chip contains frequencies and formulas that are intended to support the formation of the fibre protein elastin, which is important for shaping the skin, and the structural protein collagen, which is responsible for the firmness of the tissue.



STA - Protection against radiation

The chip contains formulas and frequencies that are intended to protect and stabilize our body against radiation exposure from strong electromagnetic fields: such as MRT, CT, X-rays, mobile phones, etc. In case of already existing radiation exposures, it is supposed to support the body in its elimination on all levels.



SYS - System

A well-balanced system in which body, mind and soul are in harmony is the basis for natural quality of life, balance and inner harmony.

A system is like a mosaic in which the individual parts are finished in themselves. Together they form a unique work of art. Both the individual parts, as well as the relationship and inter-relationship between the individual parts is important, because everything together only results in a finished and rounded picture. The chip should harmonize the corresponding systems and restore the natural order. Each part should be in its place, fulfil its assigned task and contribute its part to the big whole.



TES - Testosterone

The classic, male sex hormone testosterone is also detectable in women. If too little of it is produced, it leads, so to speak, to a loss of pleasure. The akury information chip „testosterone“ should help to keep the testosterone level at an optimal level.



THA - Thinking Advantage

The chip improves, optimises and reactivates the neuronal networking of individual areas of the brain. This can lead to a noticeable sharpening in the clarity and alertness of your thinking.



THY - Thymus gland

The thymus (thymus gland, sweetbread) is an important part of the immune system. In the thymus, certain white blood cells (lymphocytes) acquire their immunological imprint. At the same time the maturation of disease-fighting T-cells are stimulate by thymus hormones. The thymus gland is only active in childhood and adolescence.

The frequencies and formulas contained in the chip should contribute to an optimal function of the thymus gland.



TIN - Tinnitus

At first we cannot assign a beginning tinnitus to a known tone and cannot understand it emotionally. Therefore the subconscious signals danger, the affected person instinctively reacts with panic and feels helpless at the mercy of the strange sound. The resulting sensitivity to the sound often makes the perception even stronger. The chip supports the transformation of the tinnitus tone into an already familiar tone and conveys the awareness that there is no longer any danger of being exposed to it. It promotes the correct processing of information from the auditory nerve.

TOX

Toxins
Toxine

www.akury.de

TOX - Toxins

In connection with the AUS (removal chip), Toxins supports on the energetic level the removal of organic toxins that are released into the body by bacteria or fungi as metabolites or through natural toxic substances that enter the body in the form of food-stuffs and affect the body.

- The AkuRy information chips contain the frequencies, formulas and information required for rejuvenation.

VIP

Vasoactive
Intestinal
Polypeptide

www.akury.de

VIP - Vasoactive intestinal peptide

is a gastrointestinal peptide hormone consisting of 28 amino acids. VIP is formed in the duodenum when fats occur there.

VIR

Viruses
Viren

www.akury.de

VIR - Virus

The information chip contains frequencies and formulas that are responsible for immune self-regulation in all acute and chronic infectious viral processes.

VOR - Prevention

This is a pure test chip for therapists which might indicate Neoplasms.

VJG

Rejuvenation
Verjüngung

www.akury.de

VJG - Rejuvenation

To stop the aging process and rejuvenate, the following properties are essential Meaning:

- An optimal immune activity that ensures the rapid removal of dead/senescent cells.
- Optimal reactivation of the body's self-healing powers
- An optimal thymus function for the maturation of the T-cells
- An optimal oxytoxin concentration for the formation of fresh muscle cells
- A high sirtuin content in the cells, combined with an optimal NAD+ level
- Preservation/rebuilding of the telomere origin length after each cell division
- The ecomenization of the metabolism, optimal acid-base balance and a well-functioning cardiovascular and lymphatic system.

VNA

Vagus-Nerve-
Activator

www.akury.de

VNA - Vagus Nerve Activator

The vagus nerve is the longest brain nerve in our body. It connects the brain with many important organs of the body, including intestines, heart and lungs - and is associated with an explanation why many psychosomatic complaints affect the intestine (irritable bowel) and the heart (heart stumbling). The vagus nerve is an important part of the parasympathetic nervous system. This affects breathing, digestion and heart rate. All these things can ultimately affect mental health. The AkuRy Information Chips contains formulas, frequencies and information that have a positive influence on the regulating mechanisms of the vagal tone.

VOR

Prevention
Vorsorge

www.akury.de

VSW

Vitamin metabolism
Vitaminstoffwechsel

www.akury.de

VSW - Vitaminstoffwechsel

Vitamine haben im Stoffwechsel essenzielle Funktionen. Sie dienen bei vielen biochemischen Reaktionen als Cofaktoren und Coenzyme. Der vollständige Entzug auch nur eines Vitamins aus der menschlichen Nahrung ist auf Dauer nicht mit dem Leben vereinbar. Der VSW Chip enthält Informationen und Frequenzen, welche die katalytischen und regulatorischen Funktionen der Vitamine auch als Coenzyme sowie deren Verteidigungsfunktion gegen oxidativen Stress unterstützen sollen.

WHY Why? Warum?

www.akury.de

WHY - Why/Warum?

Könnte zum inneren Abstand beitragen, die Intuition fördern, die Ursachen und Lernerfahrungen einer gegenwärtig schwierigen Situation zu erkennen und zu verstehen.

ZIL

Back to Life
Zurück ins Leben

www.akury.de

ZIL - Back to Life/Zurück ins Leben

Der Chip enthält Frequenzen, die uns nach schwerer Krankheit oder einem traumatischen Erlebnis (Verlust eines Menschen, Unfall etc.) unterstützen, in unser Leben zurückzufinden.

AkuRy Informations-Chips Sets.

Here you find the sets, consisting of 16 or 35 chips of your choice. Each chip may only be ordered 1x in the set. Please select the chips you want.



The inner spring cleaning

For the so-called „inner spring cleaning“ I offer a 3-piece Akury Tripple „E“ set. Consisting of the chips:

EEE - Entgiften, Entschlacken, Entsäuern

OME - Optimaler Metabolismus (Stoffwechsel) und

MIR - Mitochondrien Regulation an.



These three information chips are used to monitor the body with all its organs and to detoxify, purify and deacidify tissue layers, to bring all metabolic functions into balance and to support the cleansing and activation of the mitochondria on the energetic as well as on the physical level.

Influenza/Corona-Virus

4 akury information chips to stabilize and strengthen your immunesystem.

Chips in this set:

SIR - Strong Immune-System

REC - Quick Recovery

REX - Relaxation

VIR - Viruses





Influenza Set Support / Corona-Virus

4 akury information chips to support by infection

Chips in this set:

LUN - Lung

OXY - Oxygen Balance

KEP - Keep Cool

RBB - Recharge the body batteries



Early childhood reflexes

Most of the early childhood reflexes should already be integrated during pregnancy and inhibited from a certain age after birth. If this is not the case, considerable health impairments can occur later in life.

The information chips should help to integrate the non-integrated reflexes. They are used by the therapist for quick diagnosis and later support of the therapy.

FRF

Early reflexes
Frühkindliche
Reflexe
www.akury.de

FRF - Early childhood reflexes (basic chip)

Most reflexes should be integrated during pregnancy. The chip should support this integration during the course of the pregnancy.

APR

Amphibious reflex
Amphibien Reflex
www.akury.de

APR - The amphibian reflex

The amphibian reflex should be integrated between the 4th and 6th month of life. It is the only reflex that is maintained in its function for a lifetime.

Symptoms of non-integration during learning:
Adults without a developed amphibious reflex often suffer from sluggishness in the lower body and tension in the legs.

Health problems:

- shuffling gait
- Don't lift your legs when you walk

ATNR

Asymmetric tonic
neck reflex
Asymmetrischer
Tonischer Nacken
Reflex
www.akury.de

ATNR - Asymmetrical tonic neck reflex

Integration: until the 16th week of pregnancy
Inhibition: until 6 months of age

Symptoms of non-integration during learning:

- Inexpert and often bumps into people sitting next to him
- cramped pin retention

- fixed pen pressure
- sheet will only describe half of it
- Sheet is wrong on the table
- Shoe tying takes a long time

Symptoms in behavior:

- Uncoordinated arm and leg movements
- unstable balance
- clumsy behaviour and avoiding crossing the centre line
- misplaced side dominance

Health problems:

- visual disturbance, strabismus
- motor problems
- balance problems

BAR

Babkin Reflex

www.akury.de

BAR - Babkin reflex

Integration: By the 11th week of pregnancy

Inhibition: Up to 6 months of age

Symptoms of non-integration during learning:

- Tinkering, painting and drawing are difficult
- Little stamina
- Sports lessons can be very strenuous
- Lisp
- Frequently open mouth when working

Symptoms in behavior:

- Increased swallowing and heavy drooling
- articulation problems and malpositioned teeth
- Difficult hand motor skills

Health problems:

- malposition of the foot and disturbance of the arch of the foot
- tooth malalignment
- speech and articulation disorders
- nutritional problems

BBR

Babinski Reflex

www.akury.de

BBR - Babinski reflex

Integration: After birth

Inhibition: Up to 12 months of age

Symptoms of non-integration during learning:

- Physical education is strenuous
- Eye position prevents fluent and prolonged reading

Symptoms in behavior:

- Inclination to X- or bow legs
- Running is unpopular and is avoided
- Influence on eye position

Health problems: foot malposition

FLR

Faer-paralysis reflex Frucht-Lähmungs Reflex

www.akury.de

FLR - Fear-paralysis reflex

Integration: From the 6th week of pregnancy

Inhibition: Until the 32nd week of pregnancy

Symptoms of non-integration during learning:

- reading problems on white paper
- concentration on the essential not possible
- Little stamina
- poor close-up vision

Symptoms in behavior:

- anxiety without reason
- Low stress tolerance
- Aversion to change
- Likes to keep control
- uncertainty
- Little eye contact
- variations in mood
- Low self-esteem
- aggressions

Health problems:

- Muscle armour
- immune deficiency, allergies
- travel sickness
- belly- and headache

- Pseudocroup, bronchial asthma
- blockage
- Blood sugar problems

GRR

Gripping reflex
Geif-Reflex

www.akury.de

GRR - Gripping Reflex

Integration: By the 11th week of pregnancy

Inhibition: Up to 12 months of age

Symptoms of non-integration during learning:

- wrong pen posture
- poorly legible typeface

Symptoms in behavior: Low manual dexterity

Health problems: Tennis Elbows

HZR

Pull-up reflex
Hochzieh Reflex

www.akury.de

HZR - Pull up reflex

Integration: Until the 28th week of pregnancy

Inhibition: Until the 2nd month of life

Symptoms of non-integration during learning:

- wrong pen posture
- poorly legible typeface

Symptoms in behavior: Low manual dexterity

Health problems: Tennis Elbows

LRF

Landau Reflex

www.akury.de

LRF - Landau reflex

Integration: By the 4th week of life

Inhibition: Up to 36 months of age

Symptoms of non-integration during learning:

- poor concentration
- Sports lessons are not much fun
- breast swimming hardly possible

Symptoms in behavior:

- poor body and sitting posture
- wrong breathing, therefore short concentration
- Little stamina
- robot-like movements

Health problems:

- back problems
- motor problems
- balance problems

MOR

Moro Reflex

www.akury.de

MOR - Moro reflex

Integration: From the 10th week of pregnancy

Inhibition: Up to 4 months of age

Symptoms of non-integration during learning:

- reading problems on white paper
- concentration on the essential not possible
- Little stamina
- poor close-up vision

Symptoms in behavior:

- anxiety without reason
- Low stress tolerance
- Aversion to change
- Likes to keep control
- uncertainty
- Little eye contact
- variations in mood
- Low self-esteem
- aggressions

Health problems:

- -Muscle armour
- -immune deficiency, allergies
- -travel sickness
- -belly- and headache
- -Pseudocroup, bronchial asthma
- -blockage
- -Blood sugar problems

PLR

Plantar grasp
reflex

Plantar Greif
Reflex

www.akury.de

PLR - Plantar reflex

Integration: By the 11th week of pregnancy

Inhibition: Up to 6 months of age

Symptoms of non-integration during learning:

- Tinkering, painting and drawing are difficult
- Little stamina
- Sports lessons can be very strenuous
- Lisp
- Frequently open mouth when working

Symptoms in behavior:

- Increased swallowing and heavy drooling
- articulation problems and malpositioned teeth
- Difficult hand motor skills

Health problems:

- malposition of the foot and disturbance of the arch of the foot
- tooth malalignment
- speech and articulation disorders
- nutritional problems

SSR

Sucking reflex

Saug Reflex

www.akury.de

SSR - Suction Reflex

Integration: Until the 24th week of pregnancy

Inhibition: Up to 4 months of age

Symptoms of non-integration during learning:

- Tinkering, painting and drawing are difficult
- Little stamina
- Sports lessons can be very strenuous
- Lisp / Frequently open mouth when working

Symptoms in behavior:

- Increased swallowing and heavy drooling
- articulation problems and malpositioned teeth
- Difficult hand motor skills

Health problems:

- malposition of the foot and disturbance of the arch of the foot
- tooth malalignment
- speech and articulation disorders
- nutritional problems

SGR

Spinal galant
reflex

Spinaler Galant
Reflex

www.akury.de

SGR - Spinal Gallant Reflex

Integration: Integration: Until the 20th week of pregnancy

Inhibition: Up to 9 months of age

Symptoms of non-integration during learning:

- -continually fidgeting around
- -Must go to the toilet all the time
- -short term memory is impaired

Symptoms in behavior:

- -frequent urination
- -nightly wetting beyond the age of 5 years
- -Uneven gait pattern

Health problems:

- -Scoliosis
- -wetting
- -concentration disorders
- -hip problems
- -walking problems

STNR

Systemic tonic
neck reflex

Systemisch Tonischer
Nacken Reflex

www.akury.de

STNR - Symmetrical Tonic Neck Reflex

Integration: Until the 18th week of pregnancy

Inhibition: Until the 11th month of life

Symptoms of non-integration during learning:

- double images
- slow copying from the blackboard
- Lying over the table while writing
- Can't keep calm
- attention problems

Symptoms in behavior:

- Problematic body coordination
- motor weaknesses
- visual impairment to visual defect
- bad attitude
- W posture of the legs when sitting on the floor
- Tiddling up with food
- Swimming difficult

Health problems:

- Motor problems
- balance problems
- problems of the ocular motor function, especially near vision and accommodation
- problems with the perception of space and depth

TLR

Tonic labyrinth
reflex

Tonischer Labyrinth
Reflex

www.akury.de

TLR - Tonic Labyrinth Reflex

Integration forward: Up to the 12th week of pregnancy

Inhibition: Up to 4 months of age

Integration backwards: At birth

Inhibition: Up to 36 months of age

Symptoms of non-integration during learning:

- number turners, letter turners
- Missing leaf division
- computing and writing problems
- regular procedures cannot be identified and adhered to

Symptoms in behavior:

- orientation and balance problems
- Unrest
- lack or tense muscles
- Forgetfulness
- Long pacifier and thumb sucking phase
- Swimming difficult
- standing tired
- No sense of time

Health problems:

- nausea, dizziness
- foot malpositions
- breathing problems
- visual problems
- fear of heights
- back problems
- problems of muscle tension
- motor problems
- balance problems

To rid the body of toxins

When people talk about excretion, then most people think „to free the body from heavy metals or to bind and excrete them. In our body, however, countless toxins could be deposited or embedded in the fatty tissue and even in the brain every day. Among the best known substances are heavy metals, vaccines, poisons in the home and the environment, solvents, softeners, nerve poisons, preservatives, flavour enhancers, flavourings, herbicides, pesticides, insecticides, pesticides, wood preservatives, Pharmaceutical substances, artificial hormones, drugs, nicotine, anaesthetics and contrast agents, narcotics, the burden of chemotherapy, tumour-causing substances, hydrocarbons and much more, which we take in through the food chain, the respiratory tract or through skin contact with our bodies.

Of course, our body also has its own regulatory powers, which should help to free it from the countless harmful substances. This is most likely to happen when the immune system and also the excretory organs are stable and strong enough to do their job. Unfortunately, this is not always the case, however, and in addition to a period of weakness/disease, a decisive process also occurs which allows toxins to enter our body which cannot be eliminated in the normal way by the natural regulatory mechanisms during this phase. In this case there is a need for support.

Good bye Toxins



AUS-AAH

drugs, dental fillings
artificial hormones
chemosubstances

Arzneimittel, Chemo,
Zahnfüllungen,
künstliche Hormone

www.akury.de

AUS-AAH

Detoxification of drugs, artificial hormones, dental fillings, chemotherapeutic agents.

The chip contains frequencies, information and formulas which are supposed to support the elimination.

AUS-ABN

Anaesthetics, narcotics,
contrast media

Betäubungsmittel,
Narkotika,
Kontrastmittel

www.akury.de

AUS-ABN

Detoxification of narcotics, narcotics, contrast material. The chip contains frequencies, information and formulas that are supposed to support the extraction.

AUS-ADA

Drugs Alcohol
Tobacco

Drogen Alkohol
Tabak

www.akury.de

AUS-ADA

Detoxification of drugs, alcohol, tobacco (ingredients).

The chip contains frequencies, information and formulas that are supposed to support the extraction.

AUS-AGS

Earth radiation,
radiation
eSmog, electronics

Erdstrahlung, Strahlung
eSmog, elektronik

www.akury.de

AUS-AGS

Detoxification of earth radiation, radiation (3G, 4G, 5G, X-rays, MRC, CT and many more), negative influences and electronics. The chip contains frequencies, information and formulas that support the excretion.

AUS-AHP

Herbicides, pesticides
fungicides, insecticides

Herbi-, Pesti-, Fungi,
Insektizide

www.akury.de

AUS-AHP

Detoxification of herbicides, pesticides, fungicides, insecticides, plant and wood preservatives. The chip contains frequencies, information and formulas that are intended to support the excretion.

AUS-AIM

Vaccine
ingredience

Impfinghaltsstoffe

www.akury.de

AUS-AIM

Detoxification of vaccine ingredients. The chip contains frequencies, information and formulas that are intended to support the excretion.

AUS-AGK

Preservatives,
Flavour enhancer,
Flavouring subst.

Konservierungsstoffe
Geschmacksverstärker,
Aromastoffe

www.akury.de

AUS-AGK

Detoxification of preservatives, flavour enhancers, flavourings, thickening, binding and separating agents. The chip contains frequencies, information and formulas which are supposed to support the excretion.

AUS-AKT

Hydrocarbons
Toxic elements
Tumorigenic sub.

Kohlenwasserstoffe
toxische Elemente
Tumorerzeug. Stoffe

www.akury.de

AUS-AKT

Detoxification of hydrocarbons, toxic elements, tumour-causing substances, antioxidants, organic and chemical compounds. The chip contains frequencies, information and formulas to support the excretion.

AUS-ALW

Solvent, plasticizer
disinfectant

Desinfektionsmittel
Lösungsmittel
Weichmacher

www.akury.de

AUS-ALW

Detoxification of solvents, plasticizers, disinfectants. The chip contains frequencies, information and formulas to support the excretion.

AUS-AME

Heavy metals
Schwermetalle

www.akury.de

AUS-AME

Detoxification of metals and heavy metals. The chip contains frequencies, information and formulas to support the excretion.

ANG-AUS

Neurtoxins

Nervengifte www.akury.de

[akury.de](http://www.akury.de)

AUS - ANG

Detoxification of nerve toxins. The chip contains frequencies, information and formulas to support the excretion

AUS-ASE

Acidifiers, emulsifiers,
dyes, sweeteners,

Säuremittel, Süßstoffe,
Farbstoffe, Emulgator

www.akury.de

AUS-ASE

Detoxification of acid agents, acidity regulators, dyes, emulsifiers, sweeteners, sugar substitutes-

The chip contains frequencies, information and formulas that are intended to support the excretion.

AUS-ATL

Textile paints, terpenes,
adhesives, varnishes,
scented oils, cosmetics

Textilfarben, Lacke,
Kleber, Terpene,
Duftöle, Kosmetik

www.akury.de

AUS-ATL

Detoxification of allergenic textile dyes, lacquers, adhesives, terpenes, fragrance oils, cosmetics, jewellery. The chip contains frequencies, information and formulas which are supposed to support the excretion.

AUS-AWG

Residential and
environmental
toxins

Wohn-/Umweltgifte

www.akury.de

AUS-AWG

Detoxification of residential and environmental toxins.

The chip contains frequencies, information and formulas which are supposed to support the excretion.

Detoxifying agents

General instructions for use

Therapists can find out the appropriate remedies or a combination of several substances for their clients/patients by testing the various akury detox chips.

Note: The optimal detox effect is achieved by taking the detoxifying agents in doses on the physical level in addition to the chips worn on the body.

GNE

Toxic neutralizer

Giftneutralisator

www.akury.de

GNE - Toxic neutralizer

At the beginning of the detoxification cure it is important to neutralize the toxins so that they lose their toxic/neurotoxic effect before they are detoxified. The akury toxin neutralizer chip (GNE) contains frequencies and information to support the intended detoxification cure and to neutralize stored toxins in advance.

BAE

Wild Garlic
Bärlauch

www.akury.de

BAE - Wild garlic

Its effect on the human organism is similar to that of garlic. It stimulates the appetite, boosts bile production and generally aids digestion. The vessels are dilated by wild garlic, the cholesterol level is lowered. Wild garlic is the plant with the highest sulphur content in Europe - one reason why holistically oriented dentists often use wild garlic preparations in combination with chlorella algae for the detoxification after amalgam sanitation. The akury Wild Garlic Chip (BAE) contains the vibrations and information of the wild garlic and is supposed to support the detoxification cure.

Note: The optimal detoxification effect is achieved by additionally taking the detox agents in doses on the physical level.



CAP - Capilarex

Through modern scientific has been found out that the substance pectin unfolds the positive properties. Capilarex is a pectin dietary fibre isolated from freshwater reed grass (Zostera) by special methods with a high natural content of short-chain pectin chains. Compared to conventional dietary fibres, these are characterised by a special binding capacity for heavy metals and similar ionic foreign substances in the food. Capilarex has a low-molecular (acids and toxins high-molecular) pectin content of 60 percent. Russian scientists proved in 2002 that pectin has the ability to bind heavy metals and similar ionic foreign substances and to eliminate them from the body. The akury Capilarex-Chip (CAP) contains the vibrations and information of Capilarex and is supposed to support the detoxification cure.

Note: The optimal detoxification effect is achieved by additionally taking the detoxifying substances in doses on the physical level.



CHL - Chlorella algae

While some detoxifying agents (e.g. coriander) can mobilize the toxins accumulated in the body from the cells and thus release them from the tissue, chlorella is perfectly suited to bind the now free toxins (especially metals) to itself and discharge them. Chlorella thus has a similar effect to spirulina, but its absorption power is even stronger. In addition to certain proteins and peptides (short-chain proteins), which are responsible for the chlorella's detoxifying function, the microalgae contain enormous amounts of chlorophyll. The akury chlorella chip (CHL) contains the vibrations and information of the chlorella algae and is intended to support the detoxification process.

Note: The optimal detoxification effect is achieved by additionally taking the detox agents in doses on the physical level. Der akury Chlorella-Chip (CHL) enthält die Schwingungen und Informationen der Chlorella-Alge und soll die Ausleitkur unterstützen.



KOR - Coriander

Genuine coriander is a plant species in the umbellifer family. It is used as a spice and medicinal plant. According to the latest scientific studies, the active ingredients of coriander are able to detoxicate toxins and heavy metals from the human organism. This medical herb is of great importance in detoxification therapy, especially in cases of amalgam contamination. Dr. Nomura discovered that fresh coriander crosses the blood-brain barrier and is the most effective heavy metal detoxifier for the brain.

The akury coriander chip (KOR) contains the vibrations and information of coriander and is said to support the detoxification cure.

Note: The optimal detoxifying effect is achieved by additionally taking the detox agents in doses on the physical level.



LGR - Liver-Gall Cleansing

The akury Liver-Gall Cleansing-Chip (LGR) contains the vibrations and information of milk thistle, turmeric, agrimony, sheep's gift and dandelion, which should support the detoxification cure.

Note: The optimal detoxifying effect is achieved by additionally taking the detoxifying substances in doses on the physical level.



PAA - Parasite detoxification

The akury Parasite Detoxification Chip (PAA) contains the vibrations and information of wormwood, black walnut and cloves, which are supposed to support the detoxification cure of parasites.

Note: The optimal detoxification effect is achieved by additionally taking the detox substances in doses on the physical level.

I have an allergy.

What can I do about it?

What are allergies?

The word allergy itself is of Greek origin and is composed of the words „allos“ (foreign) and „ergon“ (reaction), i.e. the „foreign reaction“. Meaning the reaction of the body to foreign bodies such as bacilli, viruses, bacteria, pollen, etc. It is important to make a clear distinction between allergies and so-called autoimmune diseases. These are characterized by similar symptoms, but have different causes. Allergies are only referred to when substances penetrating from outside act as triggers for the negative reaction of the immune system. The reasons for the emergence of allergies are widely discussed and are controversial issues at many medical symposia. Especially the steady progress and the increase of allergies of all kinds often offer rich discussion material for science. The treatability of allergies makes them tolerable for those affected, but all in all they would not even have to arise if less attention was paid to sterile and clinical cleanliness for the smallest patients.

ALL-AKA

Alcohol Allergie
Alkoholallergie

www.akury.de

ALL-AKA - Alcohol Allergy

The alcohol allergy is medically also called ethanol allergy or ethanol intolerance. This is when even after drinking the smallest amounts of alcohol, certain symptoms occur which are similar to those of a hangover or other allergies. It is important to note that not only the consumption of alcohol can cause skin reactions. Perfumes, which also contain alcohol, or even certain cleaning agents can lead to allergic symptoms. The ALL-AKA chip contains the oscillations, frequencies and information that are supposed to contribute to the alleviation/resistance of an alcohol allergy

ALL-AMG

Drug allergy
Arzneimittel-
allergie
www.akury.de

ALL-AMG - Drug allergy

A drug allergy is caused by unwanted side effects of drugs. In the case of drug intolerance, the drug is not processed properly. The disease can be caused by the active ingredient of the drug or by its excipients (pharmacologically non-active ingredients: dyes, emulsifiers, binding agents, etc.). The allergy can be caused by any drug. The ALL-AMG chip contains the oscillations, frequencies and information that are intended to contribute to the alleviation/resistance of a drug allergy.

ALL-BEA

Occupational
allergy
Berufsbedingte
Allergie
www.akury.de

ALL-BEA - Occupational allergy

Allergies are among the most common occupational diseases. In hay fever, an allergy to mold or other types of allergy, the body reacts to certain materials in the environment at the workplace with allergic reactions. The ALL-BEA chip contains the vibrations, frequencies and information that are intended to contribute to the alleviation/resistance of an occupational allergy

ALL-HSA

House dust
Hausstaub
www.akury.de

ALL-HSA - House dust

allergy A house dust allergy or (more precisely) dust mite allergy is a sensitization and allergic reaction to the feces of house dust mites, which can cause rhinitis, itching and allergic asthma. The house dust allergy is the manifestation of a parasitosis. The ALL-HSA chip contains the oscillations, frequencies and information that are supposed to contribute to the alleviation/resistance of a house dust allergy.

ALL-IGA

Insecticide
allergy
Insektengift-
allergie
www.akury.de

ALL-IGA - Insecticide allergy

An insect venom allergy (also called hymenopteran venom allergy) is an allergic reaction to insect venoms. Such reactions occur mainly after stings of honey bees (*Apis mellifera*), wasps (especially *Vespula vulgaris*, *Vespula germanica*), more rarely also hornets (*Vespa crabro*) and bumble bees (*Bombus* spp.). The ALL-IGA chip contains the oscillations, frequencies and information that are supposed to contribute to the alleviation/resistance of an insect venom allergy

ALL-ISA

Vaccine allergy
Impfstoffallergie
www.akury.de

ALL-ISA - Vaccine allergy

An allergic reaction to the vaccine is rare, but can occur in any patient. The severity ranges from mild local reaction to anaphylactic shock. Some patients, especially those with a previous allergic reaction to the vaccine or allergic reaction to a vaccine component, are at increased risk of an allergic reaction and require special precautions when revaccinating. However, anaphylactic reactions also occur in patients without known risk factors and cannot be predicted with currently available diagnostic methods. The ALL-ISA chip contains the oscillations, frequencies and information that are supposed to contribute to the alleviation/resistance of a vaccine allergy.

ALL-KOA

Contact allergy
Kontaktallergie

www.akury.de

ALL-KOA - Contact allergy

Contact allergy is an excessive reaction of the immune system to a certain substance with which the skin has come into contact. The affected skin areas react allergically, become inflamed and itch. The contact allergy is relatively common. Over a quarter of the population in Germany reacts allergic to at least one substance after skin contact. The ALL-KOA chip contains the oscillations, frequencies and information that are supposed to contribute to the alleviation/resistance of a contact allergy.

ALL-KRA

Cross allergies
Kreuzallergien

www.akury.de

ALL-KRA - Cross allergies

Allergy sufferers often react not only to a specific allergen, but also to „close relatives“. These are substances that are biologically or chemically very similar. For example, a pollen allergy sufferer can also react with swelling and itching in the throat when eating nuts (see food allergy). This is called a cross-allergy or cross-reaction. The ALL-KRA chip contains the oscillations, frequencies and information that are supposed to contribute to the alleviation/resistance of cross allergies.

ALL-LMA

Food allergy
Lebensmittel-
allergie

www.akury.de

ALL-LMA - Food allergy

Food allergy or food allergy is a special form of food intolerance. It is characterized by a specific hypersensitivity (allergy) to certain substances contained in and absorbed with food. The ALL-LMA chip contains the oscillations, frequencies and information that are supposed to contribute to the alleviation/resistance of a food allergy.

ALL-NSA

Nickel-jewelry
allergy
Nickel-Schmuck
Allergie

www.akury.de

ALL-NSA - Nickel jewelry allergy

The nickel allergy is a contact allergy. Contact with the allergen nickel causes reddening of the skin, itching, pustules and rashes. Nickel allergy is a type 4 allergy - late type. The allergic reaction occurs 12 hours after contact with the allergen. The chip ALL-NSA contains the oscillations, frequencies and information that are supposed to contribute to the alleviation/resistance of a nickel jewelry allergy.

ALL-POA

Pollen allergy
Pollenallergie

www.akury.de

ALL-POA - Pollen allergy

The most common allergic disease in our latitudes is pollen allergy (hay fever). Those affected react to one or more types of pollen, mostly to grasses. Typical symptoms are runny nose, sneezing attacks, watery eyes. The allergy rarely occurs before the age of three. The ALL-POA chip contains the oscillations, frequencies and information that are supposed to contribute to the alleviation/resistance of a pollen allergy.

ALL-SOA

Sun allergy
Sonnenallergie

www.akury.de

ALL-SOA - Sun Allergy

In case of sun allergy, the skin becomes particularly sensitive to UV rays due to certain substances. It manifests itself in reddening, itching and often blistering. The ALL-SOA chip contains the oscillations, frequencies and information that are supposed to help alleviate/resist a sun allergy.

ALL-TIA

Animal hair
allergy
Tierhaarallergie
www.akury.de

ALL-TIA - Animal hair allergy

An animal hair allergy is an allergic reaction of type I (immediate type) to certain animal proteins from skin scales, saliva, sweat, sebum, urine or faeces. The ALL-TIA chip contains the oscillations, frequencies and information that are supposed to contribute to the alleviation/resistance of an animal hair allergy.

Chip combinations, the most common

Strengthening the immune system - SIR, REX, REC, VIR, BAK, ENG, LEA, RBB

Body cleansing - EEE, MIR, OME, CPP, OCH, EEE-Set

Elimination of toxic loads, heavy metals and parasites

AUS, TOX, RBB, PAS, EBV, BOR, SIR, Ausleitset

Allergies and intolerances - RES, GUV, FRI, LTI, SIR, HIT

Alzheimer's, Parkinson's, Dementia, Tremor - AUS, TOX, KSB, MST, CON, ALZ, PAS

Pain in general - LIN*, MCC*, ENT*, MIG, KSB (*auch als Tape)

Pain (muscle, neurological) - PNP, FIB, NHN, KSB, MUS, ADR

Burnout, energylessness

REC, REX, VNA, REK, SIR, DOP, GAB, DHEA, MOT

Sleep disorders - DRS - REC, REX, VNA, OXY, eProtect, MEL, SER

Stroke, epilepsy

NHN, KSB, SYS, EPI, ENG, MST, CON, (AUS, TOX), GSW

Cardiovascular complaints - ADR - GER, OXY, HRZ, LUN, CHO

Protection, self-protection - PAN, SEP, BUR

Arthrosis, arthritis, rheumatism, gout, joints, tendons, ligaments, multiple sclerosis

ENT, SBB, KSB, MCC, LIN, EEE-SET, MUS, BOM

Substance metabolism disorders

OME, SBB, EEE-SET, LEM, GSW, LUN, COR, KWR, LYM, ORX, HIT, HOM, HPU

Weight problems - NOW, LEP, GHR, NOR

Concentration, thinking - CON, MST, THA, GSW, AMA

Infections - VIR, HPV, HSV 1+2, SIR, ENT, ENG, INF, EBV

stomach and intestinal problems

VNA, RES, GUV, FRI, LTI, MAG, DID, DÜD, OME, NOR, LGS

Teeth and jaws - JTR, RES, AUS-AAH

Chips that everyone can use every day

REK, PEP, REC, REX, MST, KEP, SRC, CON, KRE, THA, VNA

Muscles - ACE, OMT, KSB

Glands - BSD, EPI, THY, SDD, LYN

Cells - CPP, GLZ, MIR, OCH

Metabolism - BOM, EIS, GSW, LEM, LUN, OME

Circulation - MCC

Women's problems - MEP, MES, EST, OTO, PRO, SDD, SSB

Depression - REK, REC, REX, BAT, FEA, POT, RBB, VNA, ENG

Constraints - POT, SRC, BAT, WHY, SELBST, SYS, VNA

Fears/Panic attacks - BAT, FEA, VNA, REX, OXY, POT

AD(H)S - GLZ, GSW, MST, SER, DOP, VNA (Frühkindliche Reflexe)

Psycho-somatic pain - LIN, VNA, REX, HOM, REK, RBB, ENG

Dependent Personality Disorder - SRC, BAT, FEA, ENG, SELBST, AMA

Flashback (handling)

OXY, AMA, SEE, SEN, SRC, VNA, SYS, HIN, FEA, ENO, BAT, SOS, FBE

Answers recurring questions

What happens when the chips washed in the washing machine or damaged?

As long as the chips have not completely disintegrated or are not recognizable, they still have their information and effectiveness.

Is it possible to use several chips at the same time in a box or in a bracelet safe?

Each chip has its own vibration and information(s). They mix and can therefore be used simultaneously. The chips can be assigned to the body, because our body only takes up the information that it can be needed for regulation. It does not matter on which side the chips are located

Is it possible that you do not notice a single reaction?

Yes. If I give someone a chip that they do not need, they will not feel, sense, perceive. In this case, it is exactly the same as if I were to give someone a headache tablet even though they do not have a headache at all. They would then perhaps only feel the side effects of the tablet.

If you have used the chips in a kinesiological treatment, or someone else has already used the chip before, the chips must be energetically cleansed afterwards?

The chips do not accept external energy and therefore do not need to be cleaned. They can be used by another person without worries. Even if they are exposed to very strong electromagnetic fields (airport scanners or magnets), they remain stable.

Which side should be placed on the skin?

The color side, or the silver side?

The chips do not have to be worn on the skin or removed from the case become. They also work through the fabric (clothing). So simply put them in your trouser pocket, shirt pocket, bra or in the bracelets specially made for the chip and wear. The chip side is not important. They work on both sides.

Is there a danger of becoming 'dependent' on the chips?

The chips are not comparable with drugs on which one can indeed become dependent. However, many customers (including many athletes) tell me that they feel safer and more comfortable with the chips and they miss them once they have forgotten to plug in.

Up to what distance from the body do they work?

30 to 40 cm

Should I carry on with the chips, even if I have the feeling they have worked, or is a break useful?

Every day you decide, similar to the choice of your clothes, which chips they carry. (Selection by feeling).

I have the chips in a small bag, how many may/should be in at the same time?

Can the effects cancel each other out?

The effects do not cancel each other out. Some wear up to 10 chips on their body. They can be also store and carry several chips in one sleeve.

Who can help me with the selection of the chips or if I have specific questions, help me?

You are welcome to contact me directly.

Heiko Wenner
Zum Hartberg 20
64739 Höchst i. O.
Phone 06163 9439736
Mobile 0173 3646317
www.akuryprodukte.ch
info@akury.de

Further explanations about the effective force, function and Application of the chips you will find in my Booklet (primer) „The bioenergetics house and travel kit“.



Tapes for everyday use

Use:

The akury Relief Tape is affixed to the pain point or between two points by removing the white foil marked with Pino. The akury Relief Tape has a strong sticking power and can be worn in the shower. According to the pain point, the akury Relief Tape can be worn for up to 4 days. Afterwards it loses its efficacy.

Please note:

We selected 'Pino' as our tape of choice and enhanced it with the consent of the company. The Pino tape is very well suited for our applications. Please do not affix the akury Relief Tape to wounds, burns, mucous membranes or the mouth, nose or eyes. In rare cases skin irritations or allergic reactions may be triggered by the tape. Given an existing condition whereby there is a sensitivity to plasters or tapes the tape should first be applied to a small area of the skin. Please keep in mind that not all allergic reaction occur immediately. In the event of undesired side-effects the treatment should be terminated immediately and the tape removed from the skin.

If the user is prone to allergic reactions to plasters and tape, the akury Tape is to be tested on a small area of skin. Please keep in mind that not all reaction are immediate. Reactions at a later point (after approx. 24-48 hours) may also occur.

Tape properties:

- Versatile
- Withstands sporting activities
- Extra-strong adhesive for durability
- Revolutionary backing material
- made of light-weight rayon
- Very water-resistant, quickdrying Ideally suited for people with perspiration issues
- Dermatologically tested
- Latex-free
- Supporting self-healing



LIN-Tape
The akury Relief Tape



ENT-Tape
The akury Inflammation Tape



MCC-Tape
The akury Blood-Circulation Tape



RES-Tape
The akury Allergy Tape



VNA-Tape
The akury vagus-nerve Tape



DRS-Tape
The akury Sleep Well Tape



akury®
well-being solutions

The bioenergetic home- and travel kit

Easy and efficient!



User-friendly

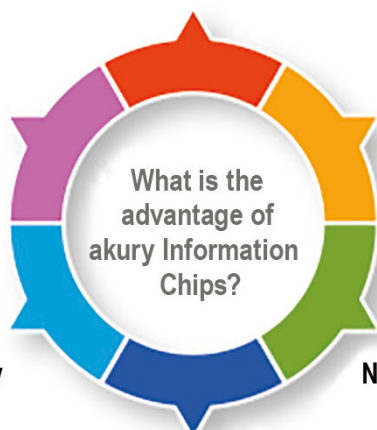
akury Information Chips are simply worn on the body.

Gentle support

No foreign physical substances are transferred to your body.

Precise use

akury Information Chips are used according to the matter or situation at hand.



Long-term effectivity

akury Information Chips do not get used up and maintain their effectivity for at least ten years.

Natural principles of action

akury Information Chips boost the self-healing powers of the organism.

Customisable

akury Information chips are suitable for the whole family.

Select your individual set of more than 100 information chips.

How are the Information Chips developed?

The creation of a chip is very complex and requires a systematic approach. First of all, the focus is on the topic of the chip, examining the complex connections and making precise notes. In the second step the resonant frequencies are determined which are then merged much like in the creation of a software program in the third step. It is comparable to an orchestra in which all the instruments are in harmony to form a symphony. When determining the frequency, the frequencies determined from the bio-resonance or from vibration potentiators of known frequencies are compiled.

Here is an real life example: ‚Development of the chip for a stable circulatory system.‘ When creating this chip I got the following additional information, which was essential for the optimal function.



In addition to the circulatory function, rhythm is also important. Our lives are marked by a multitude of rhythms that impact us. They impact us most noticeably when when they are out of sync, for example, breathing rhythm, heart rhythm, biorhythm, sleep-wake rhythm or work rhythm. Last but not least, we are subject to the rhythm of the seasons and the planetary constellations.

In the next (fourth) step, all this information is imprinted on the carrier material in the form of frequencies, formulas and programs on the carrier material using specifically and independently developed technology. It is comparable to burning a CD. The carrier material consists of 15 different substances, which ultimately serve as a vibrating data memory like a USB stick.

The Information Chip is then ready and subjected to extensive and thorough testing before it goes on sale. A team of approx. 10 therapists test the newly created Information Chip over a longer period of time in practical use. The above mentioned example is the information of ‚Healthy Rhythm‘ Chip.

What are the advantages of Information Chips?

The advantages of the Information Chips are clear and can be enumerated in six points:

1. They are easy to use because they are simply worn on the body., i.e. they can be attached to clothing, put in a pocket or carried in an bracelet or amulet.
2. They can be used according to need, topic and situation at hand.
3. By their natural principle of action, they support the self-healing powers of the organism.
4. The Information Chips are not tailored to one person and can therefore be used by the whole family.
5. They do not get used up and do not consume themselves, even if they are exposed to very strong electromagnetic fields. They retain their effectiveness for at least 10 years.
6. They act in a very gentle way.

More and more people all over the world are realising that, in addition to conventional medicine, there is now a wide range of other options for maintaining or recovering health.

Physical medicine will surpass biochemical medicine. People will learn to manage their life energy themselves. Information Chips can provide helpful support in this matter.

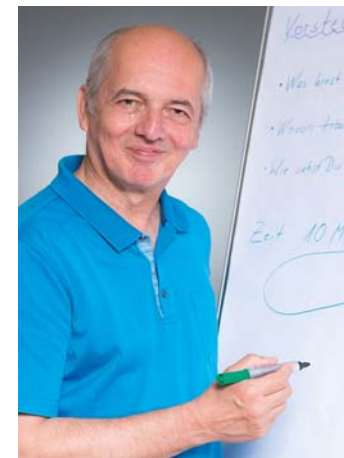


akury®
well-being solutions

AkuRy literature Book of Heiko Wenner

Protection against electromagnetic radiation.

Scientists systematically dealt with energy and vibration more than a hundred years ago. Nikola Tesla, for example, has handed down the sentence: „If you want to understand the universe, think in terms of energy, frequency and vibration“.



Heiko Wenner

Heiko Wenner discovered Bioenergetic Information Management and developed the akury Information Chips. Furthermore, he is the managing director of the akury GmbH and heads the akury Institute for energy work in Höchst in Odenwald – a training centre for building biologists and therapists.

Heiko Wenner is a sought-after lecturer and shares his experience and know-how in lectures, seminars and in specialist articles. www.akury.de



Bioenergetic Information Management

Imagine being able to manage your own power, energy and well-being? Sounds too good to be true, doesn't it? After all there are a multitude of internal and external influences which are beyond our control, aren't there?

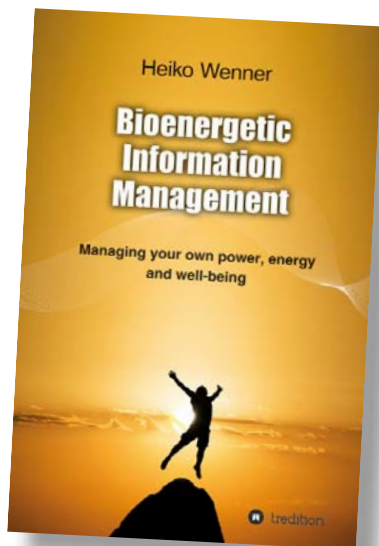
Heiko Wenner, building biologist, bioenergy expert and healer has spent a lifetime delving into this very topic. As part of his research he has dealt with vital energy, the transfer of energy and human beings's self-healing powers.

His findings: everything is a vibration. Every vibration has its own specific frequency. If the energy is not in flow, disharmonious waves and blocks of the individual cells come about. These frequencies have to be newly in-FORM-ed. This realisation was the dawn of Bioenergetic Information Management, a method which in the meantime has adherents all over the world.

Heiko Wenner develops akury Information Chips, which respond to the organism harmonising frequency in a gentle manner, dissolve blocks to support the energy flow. You can alleviate pain, dissolve fears, boost concentration, improve stamina and much more. It is a groundbreaking method for more joy in life and more energy.

This book seeks to demonstrate in a clear way:

- how you can influence your vital energy in a simple way by yourself
- how you can protect yourself from energy robbers
- how you can support the organism's self-healing powers
- why the future belongs to vibration medicine
- how you can use your very own Bioenergetic medicine cabinet



Bioenergetic Information Management

Publisher and printing:
tredition GmbH, Hamburg

ISBN
Paperback: 978-3-7469-8595-4
Hardcover: 978-3-7469-8596-1
e-Book: 978-3-7469-8597-8



akury®
well-being solutions

AkuRy Product for more Energie

More energy and vitality
for your body.

AkuRy Energy Card

Raise the vibrational level of your food

Based on this principle, the AkuRy Energy Card re-energises water using information from originally 'pure' water molecules and it therefore helps revitalise it by re-establishing the true molecular arrangement of water. The AkuRy Energy Card works similarly with food and other drinks too. Try it out yourself. Food and drink that has been revitalised and energised by the AkuRy® Energy Card tastes much more tender and more flavoursome.



AkuRy Energy Card

Because the human body comprises over 70% water, the AkuRy Energy Card has been shown to also enhance vital energy levels when you carry it with you. According to tests conducted by the International Institute for Biophysics (run by Professor Popp) in Neuss, Germany, the AkuRy Energy Card beneficially acts as a powerful influence on our body's regulatory system. The AkuRy Energy Card can also be carried in your hand-bag or wallet, and its effectiveness remains at 100% within a distance of up to 40cm.



akury®
well-being solutions

Storage of the information chips

With the AkuRy safe bracelet
and the AkuRy Belt Safe

Again and again my customers asked me how they could wear the akury-information-chips on their bodies. So far I had not found a safe solution. The women wore them partly in the capsule under their bra, the men in their shirt or trouser pockets. I was often asked whether the chips lost their effectiveness during the washing process. Many children have lost the chips.

I solved this problem with the akury belt safe and the akury safe bracelet.



Belt Safe

The belt safe is used to store information chips, money, medication or as an emergency safe for diabetes, epilepsy or allergies.

Technical data

The akury belt safe fits every belt up to 30 mm width and a belt thickness up to 5 mm.

Material

stainless steel, solid silver construction
Inside dimension: 34 x 26 mm
Depth 5 mm
Closure: Special closure
Weight: 27 gram



Safe bracelet

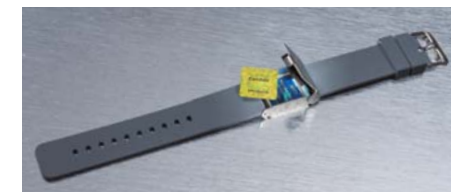
The akury-safe fits every 22mm watch strap (also comes with a color-matched bracelet)

Material

stainless steel, solid silver
External dimensions: 25 x 25 mm
Inside dimension: 22 x 22 mm depth 5 mm
Closure: special closure
Weight: 15 grams

Bracelet

22 mm silicone bracelets with quick release in light gray, dark gray, dark blue and orange.



Akury-bracelet



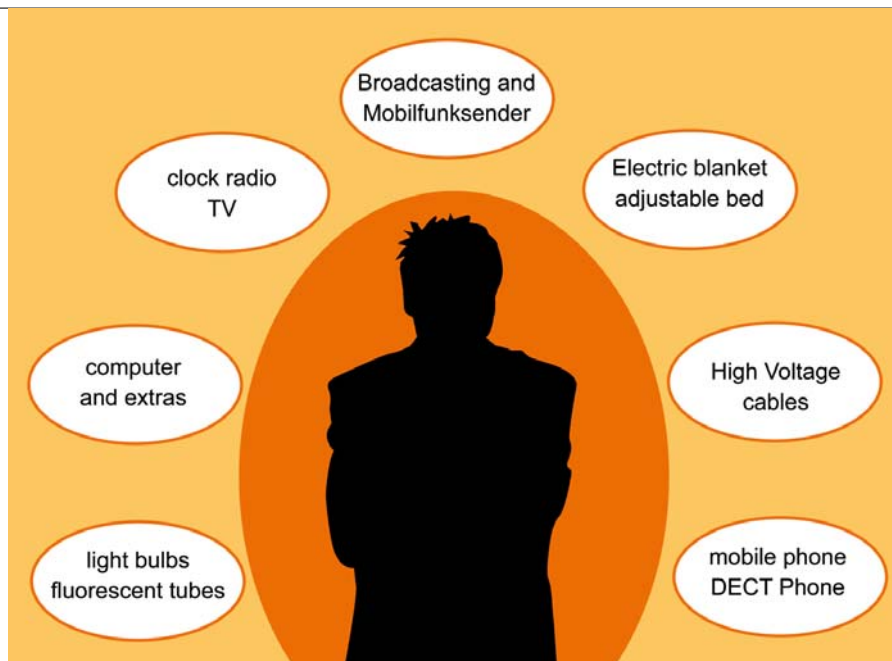
Akury-Safe bracelet



akury®
well-being solutions

eProtect-Chip with integrated 5G technology

Protection against
electromagnetic radiation.

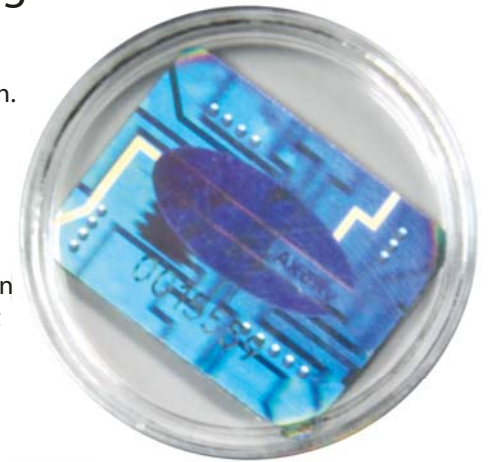


To protect against electromagnetic
Fields and negative energies

The akury eProtect chip can be used
wherever electrosmog can affect your health.

Aims:

- Protection against electromagnetic radiation
- Lowering brain activity
- Support of sleep quality and regeneration
- Shifting the pH to the basic environment



Application:

If the housing of the device can be opened, fix the chip with an adhesive strip inside. Otherwise affix to the bottom or back of the device.





akury®
well-being solutions

Amulets

Energy and vitality throughout your day

Regulate your energy system
in a short time.



Akury Amulets

The Akury Amulet is made of schungite, a carbonaceous rock that can self-charge and self-discharge like a 'hermaphrodite'. It's therefore not necessary to clean this type of healing stone.

The colourful face of the Amulet is designed along the same principle as the Akury Chip and the Akury Energy Card and so it offers similar health benefits. The stone has a harmonising effect when combined with our Akury energy foil on its front face.

By wearing the Akury schungite pendant, your entire energy system can regulate itself in a very short time. Body, soul and spirit quickly come into balance. Energy blockages can dissolve, so that healing processes get started better.

Use:

The schungite pendant should initially not be worn on the body for longer than 15 minutes, since the organism must slowly get used to the high vibration. After the acclimatization period, you can wear your schungite pendant 8-10 hours a day. It should always be worn with the film side outwards (away from the body).

Please note:

In order to maintain the effectiveness of the schungite pendant, it must not be exposed to temperatures > 60 ° C. Please also protect your schungite pendant from moisture. Schungite can leave stains. When wearing light-colored clothing, slight gray discoloration can occur.

Pendants for animals

The goals of akury Vet are: protection against electrosmog and geopathic influences. More serenity in dealing with natural events (thunderstorms, earthquakes, etc.) Promotion of a harmonious environment between humans and animals. More balance and less restlessness.

The akury Vet is water-repellent and can be worn on the collar all day. However, I mostly recommend wearing it at home in the living room, either on the collar or simply in the basket.





akury®
well-being solutions

Akury Glass Cube for at home and when traveling

Harmonize and
energize your environment.



Akury Glass Cube

The cubes are energised and they are therefore energising. Even a single Akury Glass Cube will harmonise and energise its surroundings. It's 60 x 60 x 60 mm in size and it is 100% protective within an 80 cm radius. You can therefore use it for example, as a harmonising glass paperweight on a desk.

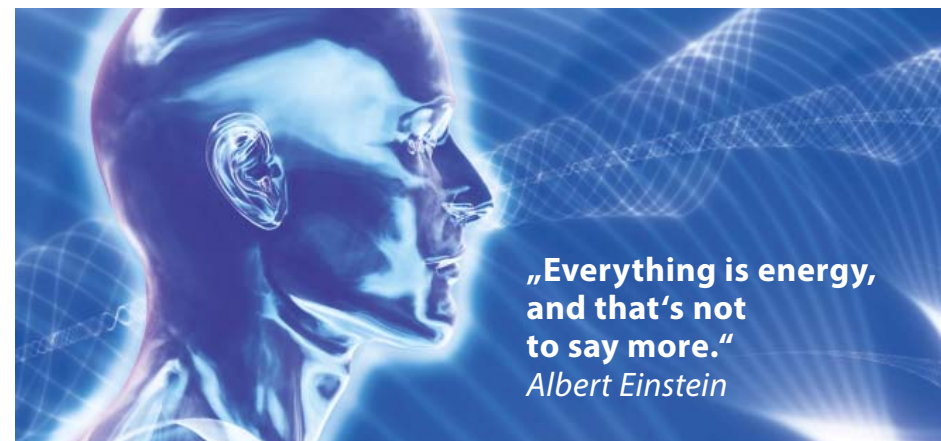
Akury Glass Cube Travel Set

Waterveins, earth faults and the global grid are normal vibrational structures of our earth's magnetic field. Nevertheless, they can have a negative impact on people's regulatory systems. A stone setting with the cubes from the Akury travel set in geomantically correct orientation covers and harmonizes the disruptive effects.



The cubes are energized. As a welcome side effect, the energy value of the implemented area increases considerably. With the Akury travel set you create a place of power - an energy-charged place.

The mobile travel set covers an area of 2.50 mx 2.50 m. It is usually used to troubleshoot hotel rooms. With the cubes you can also harmonize and energize your work area individually.



**„Everything is energy,
and that's not
to say more.“**
Albert Einstein

Please note:

Our glass cubes have ground and polished edges. However, chipping can occur if the glass edges of several cubes hit each other. We therefore recommend always transporting the cubes in our packaging with the foam separator.



akury®
well-being solutions

AkuRy-Stick

For more concentration

Energetic Harmonization of Electro-Smog.



Energetic Harmonization of Electro-Smog. Improves Concentration, Performance & Cell Regeneration

E-smog exists as a result of electromagnetic fields and radio waves such as those emitted by computers, wireless routers and wireless phones (DECT phones and cell phones).

Unprotected, these devices generate a 'chaotic' electronic frequency, comparable to the acoustic emission such as traffic or construction noise, or some other form of noise pollution.

Electronic noise stresses the human body. It can cause, for example, concentration problems, irritability and nervousness, muscle tension, headaches and malaise.

Even though humans may not consciously recognize 'e-smog', the human body itself may register a general change of sensitivity and temperature (resulting from the physical stimulation of the water molecules within our cells).

Electro-sensitive people especially react to even low radiation exposure and suffer with symptoms such as tingling, loss of energy, poor concentration and demands for increased water consumption.

The AkuRy Stick works as a filter against man-made electromagnetic fields and radio waves and can be comparable to a 'noise filter' that helps prevent traffic noise.

AkuRy-Stick USB 3.0
with 7.5 GB storage capacity, silver (chrome-plated)



